

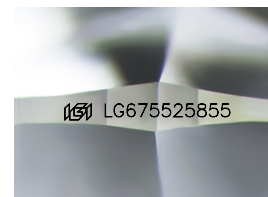
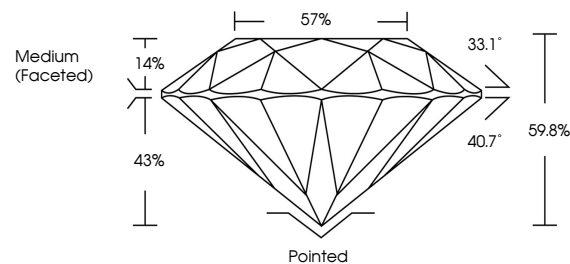


**ELECTRONIC COPY**

## LABORATORY GROWN DIAMOND REPORT

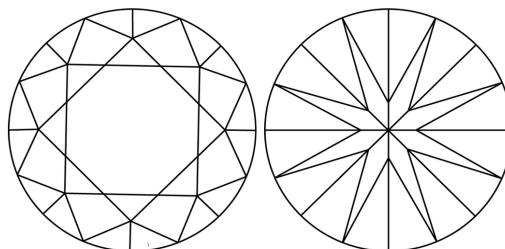
LG675525855  
Report verification at [igi.org](https://igi.org)

## PROPORTIONS



Sample Image Used

## CLARITY CHARACTERISTICS



## KEY TO SYMBOLS

Red symbols indicate internal characteristics.  
Green symbols indicate external characteristics.

## COLOR

D E F G H I J Faint Very Light Light

## CLARITY

IF      WS<sup>1-2</sup>      VS<sup>1-2</sup>      S<sup>1-2</sup>      |<sup>1-3</sup>

Internally Flawless	Very Very Slightly Included	Very Slightly Included	Slightly Included	Included
------------------------	--------------------------------	---------------------------	----------------------	----------



© IGI 2020, International Gemological Institute

FD - 10 20

**www.igi.org**

## LABORATORY GROWN DIAMOND REPORT



January 7, 2025

IGI Report Number **LG675525855**Description **LABORATORY GROWN DIAMOND**Shape and Cutting Style **ROUND BRILLIANT**

Measurements 6.97 - 7.00 X 4.18 MM

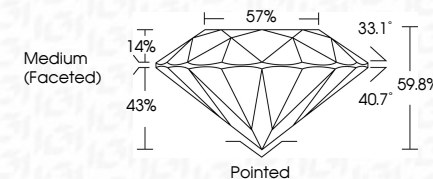
## GRADING RESULTS

Carat Weight **1.23 CARAT**

Color Grade E

Clarity Grade **VVS 1**

Cut Grade **IDEAL**



### ADDITIONAL GRADING INFORMATION

Polish EXCELLENT

Symmetry **EXCELLENT**Fluorescence NONIInscription(s)  LG675525855

Comments: As Grown - No indication of post-growth treatment.

This Laboratory Grown Diamond was created by High Pressure High Temperature (HPHT) growth process.

Type II



January 7, 2026	1.23 CARAT
IG Report No. 617/5528955	
ROUND BRILLIANT	
Weight: 1.23	
Size: 6.57 - 7.00 X 4.18 MM	
Color: Color Grade	E
Clarity: Clarity Grade	VVS 1
Cut: Cut Grade	IDEAL
Depth: Depth	59.5%
Table: Table	57%
Grades: Grades	Medium Faceted
Culet: Culet	Pointed
Polish: Polish	EXCELLENT
Symmetry: Symmetry	EXCELLENT
Fluorescence: Fluorescence	NONE
Inscriptions: Inscriptions(s)	617/5528955

Comments: As Grown - No indication of post-growth treatment.

This Laboratory Grown Diamond was created by High Pressure High Temperature (HPHT) growth process.