



ELECTRONIC COPY

LABORATORY GROWN DIAMOND REPORT

January 11, 2025  
IGI Report Number LG675506157  
Description LABORATORY GROWN DIAMOND  
Shape and Cutting Style CUT CORNERED RECTANGULAR MODIFIED BRILLIANT  
Measurements 9.02 X 6.21 X 4.24 MM

GRADING RESULTS

Carat Weight 2.04 CARATS  
Color Grade D  
Clarity Grade VVS 2

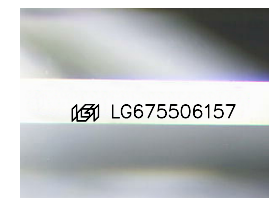
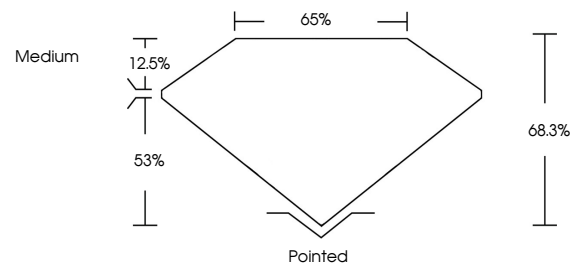
ADDITIONAL GRADING INFORMATION

Polish EXCELLENT  
Symmetry EXCELLENT  
Fluorescence NONE

Inscription(s) LG675506157

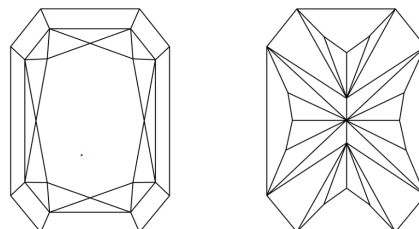
Comments: This Laboratory Grown Diamond was created by Chemical Vapor Deposition (CVD) growth process.  
Type IIa

PROPORTIONS



Sample Image Used

CLARITY CHARACTERISTICS



KEY TO SYMBOLS

Red symbols indicate internal characteristics.  
Green symbols indicate external characteristics.

COLOR

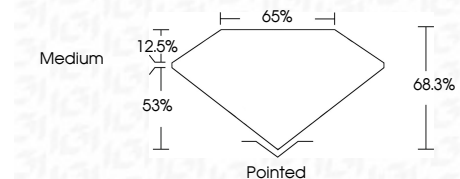
D E F G H I J Faint Very Light Light

CLARITY

IF WS<sup>1-2</sup> VS<sup>1-2</sup> SI<sup>1-2</sup> I<sup>1-3</sup>  
Internally Flawless Very Very Slightly Included Very Slightly Included Slightly Included Included



January 11, 2025  
IGI Report Number LG675506157  
Description LABORATORY GROWN DIAMOND  
Shape and Cutting Style CUT CORNERED RECTANGULAR MODIFIED BRILLIANT  
Measurements 9.02 X 6.21 X 4.24 MM  
GRADING RESULTS  
Carat Weight 2.04 CARATS  
Color Grade D  
Clarity Grade VVS 2



ADDITIONAL GRADING INFORMATION

Polish EXCELLENT  
Symmetry EXCELLENT  
Fluorescence NONE  
Inscription(s) LG675506157  
Comments: This Laboratory Grown Diamond was created by Chemical Vapor Deposition (CVD) growth process.  
Type IIa



IGI



January 11, 2025  
IGI Report No LG675506157  
CUT CORNERED RECT. MODIFIED BRILLIANT  
9.02 X 6.21 X 4.24 MM  
2.04 CARATS  
D  
2.04 CARATS  
D  
VVS 2  
68.3%  
53%  
65%  
Medium  
Pointed  
EXCELLENT  
EXCELLENT  
NONE  
LG675506157

Comments: This Laboratory Grown Diamond was created by Chemical Vapor Deposition (CVD) growth process.  
Type IIa