



**ELECTRONIC COPY**

LG674560261  
Report verification at igi.org



January 18, 2025

IGI Report Number **LG674560261**

Description **LABORATORY GROWN DIAMOND**

Shape and Cutting Style **ROUND BRILLIANT**

Measurements **8.26 - 8.29 X 5.03 MM**

**GRADING RESULTS**

Carat Weight **2.12 CARATS**

Color Grade **FANCY INTENSE PINK**

Clarity Grade **VS 1**

Cut Grade **EXCELLENT**

January 18, 2025  
IGI Report Number **LG674560261**  
Description **LABORATORY GROWN DIAMOND**  
Shape and Cutting Style **ROUND BRILLIANT**  
Measurements **8.26 - 8.29 X 5.03 MM**

**GRADING RESULTS**

Carat Weight **2.12 CARATS**

Color Grade **FANCY INTENSE PINK**

Clarity Grade **VS 1**

Cut Grade **EXCELLENT**

**ADDITIONAL GRADING INFORMATION**

Polish **EXCELLENT**

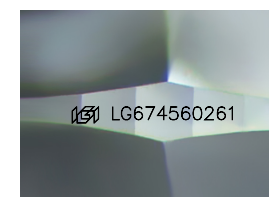
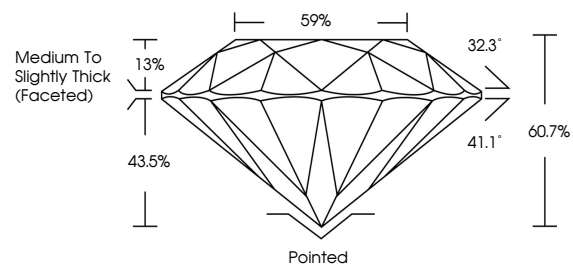
Symmetry **EXCELLENT**

Fluorescence **SLIGHT**

Inscription(s) **LG674560261**

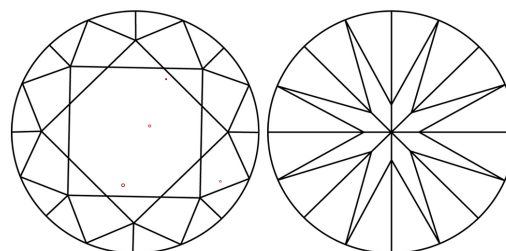
Comments: This Laboratory Grown Diamond was created by Chemical Vapor Deposition (CVD) growth process.  
Indications of post-growth treatment.

**PROPORTIONS**



Sample Image Used

**CLARITY CHARACTERISTICS**



**KEY TO SYMBOLS**

Red symbols indicate internal characteristics.  
Green symbols indicate external characteristics.

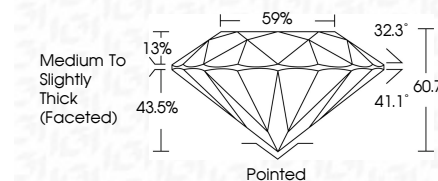
**COLOR**

D E F G H I J Faint Very Light Light

**CLARITY**

IF VS<sup>1-2</sup> VS<sup>1-2</sup> SI<sup>1-2</sup> I<sup>1-3</sup>

Internally Flawless Very Very Slightly Included Very Slightly Included Slightly Included Included



**ADDITIONAL GRADING INFORMATION**

Polish **EXCELLENT**

Symmetry **EXCELLENT**

Fluorescence **SLIGHT**

Inscription(s) **LG674560261**

Comments: This Laboratory Grown Diamond was created by Chemical Vapor Deposition (CVD) growth process.  
Indications of post-growth treatment.



January 18, 2025  
IGI Report No LG674560261  
ROUND BRILLIANT  
8.26 - 8.29 X 5.03 MM  
2.12 CARATS  
FANCY INTENSE PINK  
Color Grade  
VS 1  
EXCELLENT  
60.7%  
59%  
Medium To Slightly Thick (Faceted)  
Pointed  
EXCELLENT  
EXCELLENT  
SLIGHT  
EXCELLENT  
IGI LG674560261  
Comments: This Laboratory Grown Diamond was created by Chemical Vapor Deposition (CVD) growth process.  
Indications of post-growth treatment.