



ELECTRONIC COPY

LG674554655
Report verification at igi.org



January 20, 2025
IGI Report Number **LG674554655**
Description **LABORATORY GROWN DIAMOND**
Shape and Cutting Style **CUSHION MODIFIED BRILLIANT**
Measurements **7.91 X 6.34 X 4.36 MM**
GRADING RESULTS
Carat Weight **2.05 CARATS**
Color Grade **FANCY INTENSE YELLOW**
Clarity Grade **VS 1**

LABORATORY GROWN DIAMOND REPORT

January 20, 2025
IGI Report Number **LG674554655**
Description **LABORATORY GROWN DIAMOND**
Shape and Cutting Style **CUSHION MODIFIED BRILLIANT**
Measurements **7.91 X 6.34 X 4.36 MM**

GRADING RESULTS

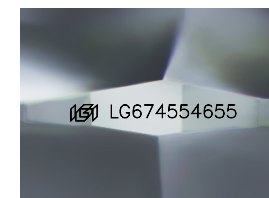
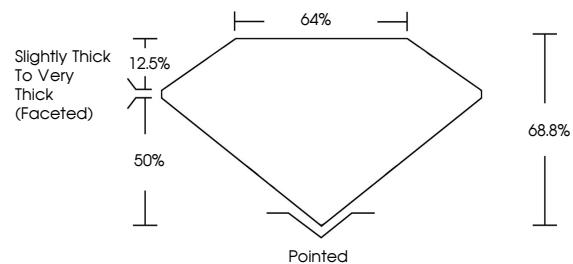
Carat Weight **2.05 CARATS**
Color Grade **FANCY INTENSE YELLOW**
Clarity Grade **VS 1**

ADDITIONAL GRADING INFORMATION

Polish **EXCELLENT**
Symmetry **VERY GOOD**
Fluorescence **NONE**
Inscription(s) **(IGI) LG674554655**

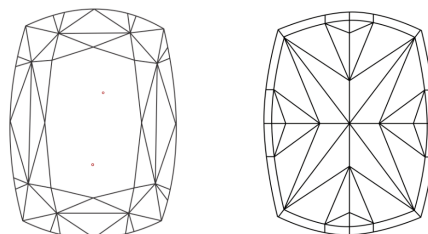
Comments: This Laboratory Grown Diamond was created by Chemical Vapor Deposition (CVD) growth process.

PROPORTIONS



Sample Image Used

CLARITY CHARACTERISTICS



KEY TO SYMBOLS

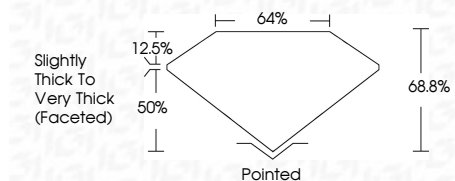
Red symbols indicate internal characteristics.
Green symbols indicate external characteristics.

COLOR

D E F G H I J Faint Very Light Light

CLARITY

IF	VS ¹⁻²	VS ¹⁻²	SI ¹⁻²	I ¹⁻³
Internally Flawless	Very Very Slightly Included	Very Slightly Included	Slightly Included	Included



ADDITIONAL GRADING INFORMATION

Polish **EXCELLENT**
Symmetry **VERY GOOD**
Fluorescence **NONE**
Inscription(s) **(IGI) LG674554655**
Comments: This Laboratory Grown Diamond was created by Chemical Vapor Deposition (CVD) growth process.



January 20, 2025
IGI Report No **LG674554655**
CUSHION MODIFIED BRILLIANT
2.05 CARATS
Carat Weight **FANCY INTENSE YELLOW**
Color Grade **VS 1**
Depth **68.8%**
Table **12.5%**
Girdle **Slightly Thick To Very Thick (Faceted)**
Culet **Pointed**
Polish **EXCELLENT**
Symmetry **VERY GOOD**
Fluorescence **NONE**
Inscription(s) **(IGI) LG674554655**
Comments: This Laboratory Grown Diamond was created by Chemical Vapor Deposition (CVD) growth process.