



INTERNATIONAL GEMOLOGICAL INSTITUTE

ELECTRONIC COPY

LG674544426

LABORATORY GROWN DIAMOND REPORT

January 17, 2025
IGI Report Number **LG674544426**
Description **LABORATORY GROWN DIAMOND**
Shape and Cutting Style **OVAL BRILLIANT**
Measurements **7.80 X 5.60 X 3.51 MM**

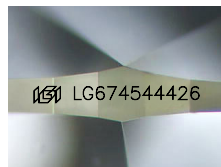
GRADING RESULTS

Carat Weight **0.97 CARAT**
Color Grade **H**
Clarity Grade **VS 1**

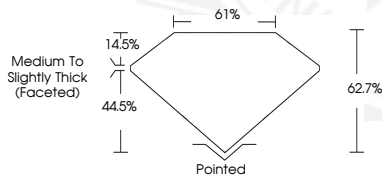
ADDITIONAL GRADING INFORMATION

Polish **EXCELLENT**
Symmetry **EXCELLENT**
Fluorescence **NONE**
Inscription(s) **IGI LG674544426**

Comments: This Laboratory Grown Diamond was created by Chemical Vapor Deposition (CVD) growth process.
Type IIa



Sample Image Used



January 17, 2025
IGI Report Number **LG674544426**
OVAL BRILLIANT
LABORATORY GROWN DIAMOND
7.80 X 5.60 X 3.51 MM
Carat Weight **0.97 CARAT**
Color Grade **H**
Clarity Grade **VS 1**
Polish **EXCELLENT**
Symmetry **EXCELLENT**
Fluorescence **NONE**
Inscription(s) **IGI LG674544426**
Comments: This Laboratory Grown Diamond was created by Chemical Vapor Deposition (CVD) growth process. Type IIa



January 17, 2025
IGI Report Number **LG674544426**
OVAL BRILLIANT
LABORATORY GROWN DIAMOND
7.80 X 5.60 X 3.51 MM
Carat Weight **0.97 CARAT**
Color Grade **H**
Clarity Grade **VS 1**
Polish **EXCELLENT**
Symmetry **EXCELLENT**
Fluorescence **NONE**
Inscription(s) **IGI LG674544426**
Comments: This Laboratory Grown Diamond was created by Chemical Vapor Deposition (CVD) growth process. Type IIa



THIS DOCUMENT WAS PRODUCED WITH THE FOLLOWING SECURITY MEASURES: SPECIAL DOCUMENT PAPER, INK SCREENS, WATERMARK BACKGROUND DESIGN, HOLOGRAM AND OTHER SECURITY FEATURES NOT LISTED AND DO EXCEED DOCUMENT SECURITY INDUSTRY GUIDELINES.

For terms & conditions and to verify this report, please visit www.igi.org