



**ELECTRONIC COPY**

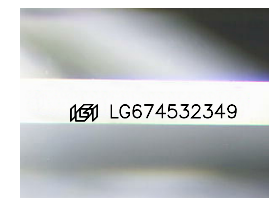
LG674532349  
Report verification at igi.org



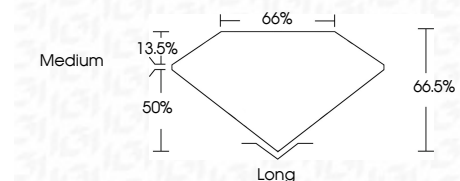
January 5, 2025  
IGI Report Number **LG674532349**  
Description **LABORATORY GROWN DIAMOND**  
Shape and Cutting Style **EMERALD CUT**  
Measurements **9.82 X 7.01 X 4.66 MM**

**GRADING RESULTS**

Carat Weight **3.10 CARATS**  
Color Grade **H**  
Clarity Grade **VVS 2**



Sample Image Used



**ADDITIONAL GRADING INFORMATION**

Polish **EXCELLENT**  
Symmetry **EXCELLENT**  
Fluorescence **NONE**  
Inscription(s) **(IGI) LG674532349**  
Comments: This Laboratory Grown Diamond was created by Chemical Vapor Deposition (CVD) growth process.  
Type IIa



January 5, 2025  
IGI Report No LG674532349  
**EMERALD CUT**  
3.10 CARATS  
H  
9.82 X 7.01 X 4.66 MM  
Carat Weight  
Color Grade  
Clarity Grade  
Depth  
Table  
Girdle  
Medium  
Long  
EXCELLENT  
EXCELLENT  
NONE  
Inscription(s)  
(IGI) LG674532349  
Comments: This Laboratory Grown Diamond was created by Chemical Vapor Deposition (CVD) growth process.  
Type IIa

**LABORATORY GROWN DIAMOND REPORT**

January 5, 2025  
IGI Report Number **LG674532349**  
Description **LABORATORY GROWN DIAMOND**  
Shape and Cutting Style **EMERALD CUT**  
Measurements **9.82 X 7.01 X 4.66 MM**

**GRADING RESULTS**

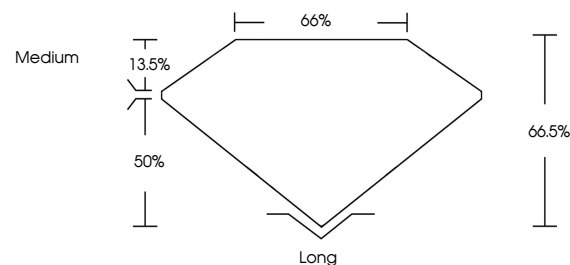
Carat Weight **3.10 CARATS**  
Color Grade **H**  
Clarity Grade **VVS 2**

**ADDITIONAL GRADING INFORMATION**

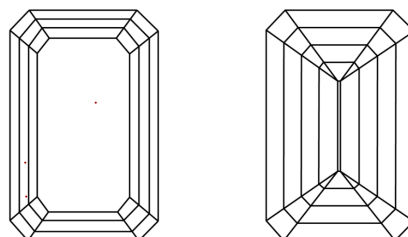
Polish **EXCELLENT**  
Symmetry **EXCELLENT**  
Fluorescence **NONE**  
Inscription(s) **(IGI) LG674532349**

Comments: This Laboratory Grown Diamond was created by Chemical Vapor Deposition (CVD) growth process.  
Type IIa

**PROPORTIONS**



**CLARITY CHARACTERISTICS**



**KEY TO SYMBOLS**

Red symbols indicate internal characteristics.  
Green symbols indicate external characteristics.

**COLOR**

D E F G H I J Faint Very Light Light

**CLARITY**

IF	WS <sup>1-2</sup>	VS <sup>1-2</sup>	SI <sup>1-2</sup>	I <sup>1-3</sup>
Internally Flawless	Very Very Slightly Included	Very Slightly Included	Slightly Included	Included

