



ELECTRONIC COPY

LABORATORY GROWN DIAMOND REPORT

January 17, 2025  
IGI Report Number **LG674532181**  
Description **LABORATORY GROWN DIAMOND**  
Shape and Cutting Style **CUT CORNERED RECTANGULAR MODIFIED BRILLIANT**  
Measurements **10.64 X 7.71 X 5.31 MM**

GRADING RESULTS

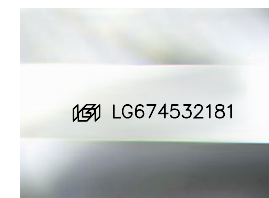
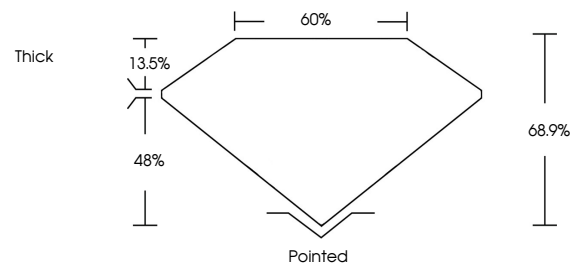
Carat Weight **4.09 CARATS**  
Color Grade **FANCY VIVID YELLOW**  
Clarity Grade **VS 1**

ADDITIONAL GRADING INFORMATION

Polish **EXCELLENT**  
Symmetry **EXCELLENT**  
Fluorescence **NONE**  
Inscription(s) **IGI LG674532181**

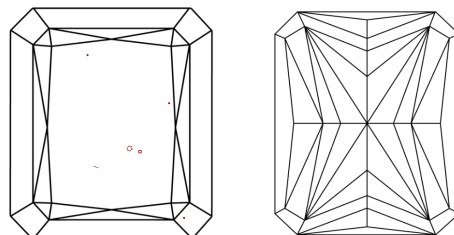
Comments: This Laboratory Grown Diamond was created by Chemical Vapor Deposition (CVD) growth process.

PROPORTIONS



Sample Image Used

CLARITY CHARACTERISTICS



KEY TO SYMBOLS

Red symbols indicate internal characteristics.  
Green symbols indicate external characteristics.

COLOR

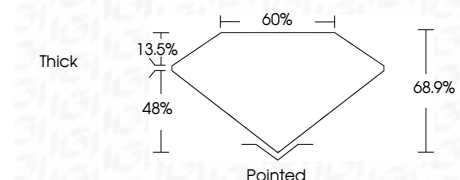
D E F G H I J Faint Very Light Light

CLARITY

IF WS<sup>1-2</sup> VS<sup>1-2</sup> SI<sup>1-2</sup> I<sup>1-3</sup>  
Internally Flawless Very Very Slightly Included Very Slightly Included Slightly Included Included



January 17, 2025  
IGI Report Number **LG674532181**  
Description **LABORATORY GROWN DIAMOND**  
Shape and Cutting Style **CUT CORNERED RECTANGULAR MODIFIED BRILLIANT**  
Measurements **10.64 X 7.71 X 5.31 MM**  
**GRADING RESULTS**  
Carat Weight **4.09 CARATS**  
Color Grade **FANCY VIVID YELLOW**  
Clarity Grade **VS 1**



ADDITIONAL GRADING INFORMATION

Polish **EXCELLENT**  
Symmetry **EXCELLENT**  
Fluorescence **NONE**  
Inscription(s) **IGI LG674532181**  
Comments: This Laboratory Grown Diamond was created by Chemical Vapor Deposition (CVD) growth process.



January 17, 2025  
IGI Report No **LG674532181**  
**CUT CORNERED RECT. MODIFIED BRILLIANT**  
**4.09 CARATS**  
Carat Weight **FANCY VIVID YELLOW**  
Color Grade **VS 1**  
Clarity Grade **68.9%**  
Depth **60%**  
Table **Thick**  
Girdle **Pointed**  
Culet **EXCELLENT**  
Polish **EXCELLENT**  
Symmetry **EXCELLENT**  
Fluorescence **NONE**  
Inscription(s) **IGI LG674532181**

Comments: This Laboratory Grown Diamond was created by Chemical Vapor Deposition (CVD) growth process.