

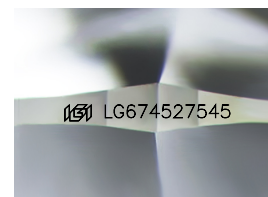
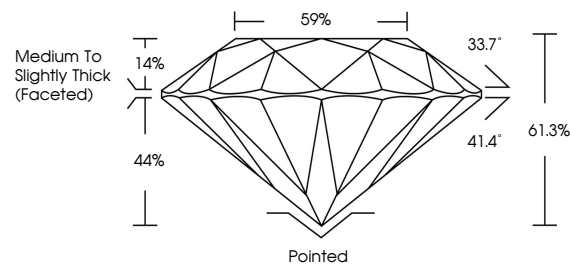


ELECTRONIC COPY

LABORATORY GROWN DIAMOND REPORT

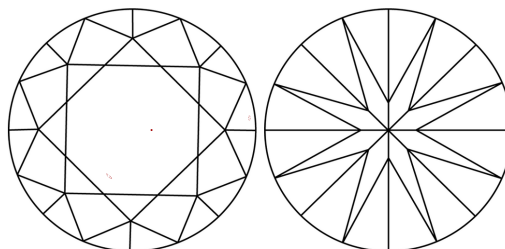
LG674527545
Report verification at igi.org

PROPORTIONS



Sample Image Used

CLARITY CHARACTERISTICS



KEY TO SYMBOLS

Red symbols indicate internal characteristics.
Green symbols indicate external characteristics.

COLOR

D E F G H I J Faint Very Light Light

CLARITY

IF WS¹⁻² VS¹⁻² SI¹⁻² |¹⁻³

Internally Flawless	Very Very Slightly Included	Very Slightly Included	Slightly Included	Included
------------------------	--------------------------------	---------------------------	----------------------	----------



January 28, 2025

IGI Report Number **LG674527545**

Description	LABORATORY GROWN DIAMOND
-------------	--------------------------

Shape and Cutting Style **ROUND BRILLIANT**

Measurements 8.23 - 8.26 X 5.06 MM

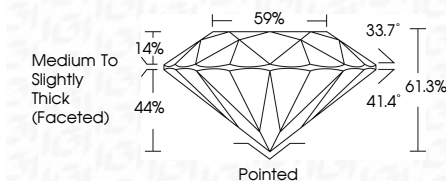
GRADING RESULTS

Carat Weight **2.10 CARATS**

Color Grade	F
-------------	---

Clarity Grade **VVS 2**

Cut Grade **EXCELLENT**



ADDITIONAL GRADING INFORMATION

Polish **EXCELLENT**Symmetry **EXCELLENT**Fluorescence **NONE**Inscription(s) LG674527545

Comments: This Laboratory Grown Diamond was created by Chemical Vapor Deposition (CVD) growth process. Type IIa. Indications of post-growth treatment.



© IGI 2020, International Gemological Institute

FD - 10 20



THIS DOCUMENT WAS PRODUCED WITH THE FOLLOWING SECURITY MEASURES: SPECIAL DOCUMENT PAPER, INK SCREENS, WATERMARK, BACKGROUND DESIGNS, HOLOGRAM AND OTHER SECURITY FEATURES NOT LISTED AND DO EXCEED DOCUMENT SECURITY INDUSTRY GUIDELINES

www.igi.org

January 28, 2026
GJ Report No. LG-74627546
ROUND BRILLIANT
2.10 CARATS
F
VVS 2
EXCELLENT
61.9%
89%
Medium to Slightly Thick (Faceted)
Poited
EXCELLENT
NONE
1691 LG-74627546

Comments:
This Gemstone was Diamond was
created by Chemical Vapor Deposition
(CVD) growth process, Type Ila,
indications of post-growth treatment.