



ELECTRONIC COPY

LABORATORY GROWN DIAMOND REPORT

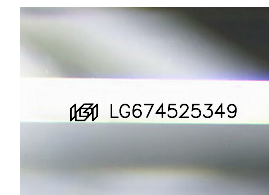
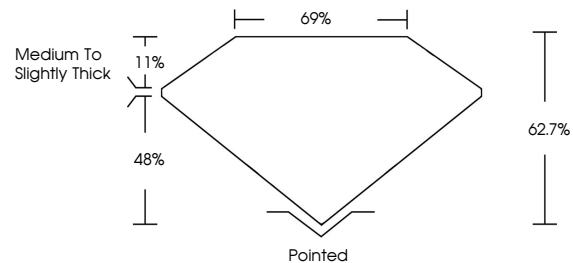
January 11, 2025
IGI Report Number **LG674525349**
Description **LABORATORY GROWN DIAMOND**
Shape and Cutting Style **TWELVE SIDED STEP CUT**
Measurements **8.22 X 5.52 X 3.46 MM**
GRADING RESULTS
Carat Weight **1.04 CARAT**
Color Grade **E**
Clarity Grade **VS 1**

ADDITIONAL GRADING INFORMATION

Polish **EXCELLENT**
Symmetry **EXCELLENT**
Fluorescence **NONE**
Inscription(s) **IGI LG674525349**

Comments: This Laboratory Grown Diamond was created by Chemical Vapor Deposition (CVD) growth process.
Type IIa

PROPORTIONS



Sample Image Used

COLOR

D E F G H I J Faint Very Light Light

CLARITY

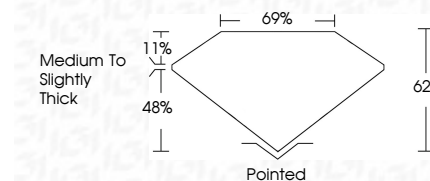
IF	VS ¹⁻²	VS ¹⁻²	SI ¹⁻²	I ¹⁻³
Internally Flawless	Very Very Slightly Included	Very Slightly Included	Slightly Included	Included



January 11, 2025
IGI Report Number **LG674525349**
Description **LABORATORY GROWN DIAMOND**
Shape and Cutting Style **TWELVE SIDED STEP CUT**
Measurements **8.22 X 5.52 X 3.46 MM**
GRADING RESULTS
Carat Weight **1.04 CARAT**
Color Grade **E**
Clarity Grade **VS 1**

ADDITIONAL GRADING INFORMATION

Polish **EXCELLENT**
Symmetry **EXCELLENT**
Fluorescence **NONE**
Inscription(s) **IGI LG674525349**
Comments: This Laboratory Grown Diamond was created by Chemical Vapor Deposition (CVD) growth process.
Type IIa



January 11, 2025
IGI Report No LG674525349
TWELVE SIDED STEP CUT
8.22 X 5.52 X 3.46 MM
1.04 CARAT
E
VS 1
62.7%
69%
Medium to Slightly Thick
Pointed
EXCELLENT
EXCELLENT
NONE
IGI LG674525349
Comments: This Laboratory Grown Diamond was created by Chemical Vapor Deposition (CVD) growth process.
Type IIa