



**ELECTRONIC COPY**

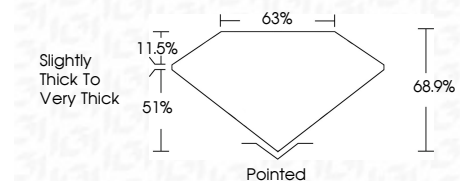
LG674521364  
Report verification at igi.org



January 17, 2025  
IGI Report Number **LG674521364**  
Description **LABORATORY GROWN DIAMOND**  
Shape and Cutting Style **CUT CORNERED  
RECTANGULAR MODIFIED  
BRILLIANT**  
Measurements **9.91 X 6.87 X 4.73 MM**

**GRADING RESULTS**

Carat Weight **3.05 CARATS**  
Color Grade **FANCY VIVID YELLOW**  
Clarity Grade **VVS 2**



**ADDITIONAL GRADING INFORMATION**

Polish **EXCELLENT**  
Symmetry **EXCELLENT**  
Fluorescence **NONE**  
Inscription(s) **(IGI) LG674521364**  
Comments: This Laboratory Grown Diamond was created by Chemical Vapor Deposition (CVD) growth process.



January 17, 2025  
IGI Report No LG674521364  
CUT CORNERED RECT. MODIFIED BRILLIANT  
9.91 X 6.87 X 4.73 MM  
3.05 CARATS  
FANCY VIVID YELLOW  
VVS 2  
68.9%  
51%  
Slightly Thick To Very Thick  
Pointed  
EXCELLENT  
EXCELLENT  
NONE  
(IGI) LG674521364  
Comments: This Laboratory Grown Diamond was created by Chemical Vapor Deposition (CVD) growth process.

**LABORATORY GROWN DIAMOND REPORT**

January 17, 2025  
IGI Report Number **LG674521364**  
Description **LABORATORY GROWN DIAMOND**  
Shape and Cutting Style **CUT CORNERED RECTANGULAR  
MODIFIED BRILLIANT**  
Measurements **9.91 X 6.87 X 4.73 MM**

**GRADING RESULTS**

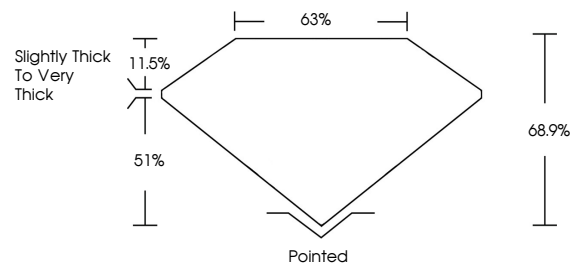
Carat Weight **3.05 CARATS**  
Color Grade **FANCY VIVID YELLOW**  
Clarity Grade **VVS 2**

**ADDITIONAL GRADING INFORMATION**

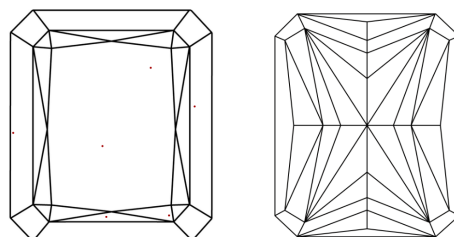
Polish **EXCELLENT**  
Symmetry **EXCELLENT**  
Fluorescence **NONE**  
Inscription(s) **(IGI) LG674521364**

Comments: This Laboratory Grown Diamond was created by Chemical Vapor Deposition (CVD) growth process.

**PROPORTIONS**

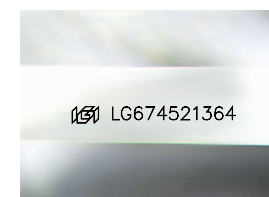


**CLARITY CHARACTERISTICS**



**KEY TO SYMBOLS**

Red symbols indicate internal characteristics.  
Green symbols indicate external characteristics.



Sample Image Used

**COLOR**

D E F G H I J Faint Very Light Light

**CLARITY**

IF	VS <sup>1-2</sup>	VS <sup>1-2</sup>	SI <sup>1-2</sup>	I <sup>1-3</sup>
Internally Flawless	Very Very Slightly Included	Very Slightly Included	Slightly Included	Included

