

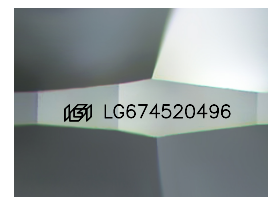
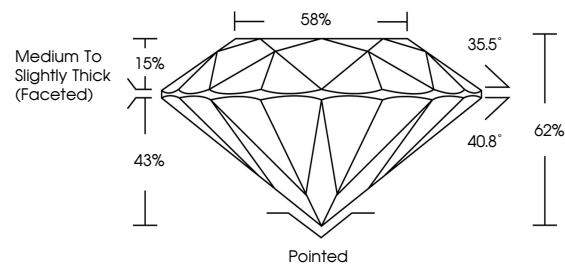


**ELECTRONIC COPY**

## LABORATORY GROWN DIAMOND REPORT

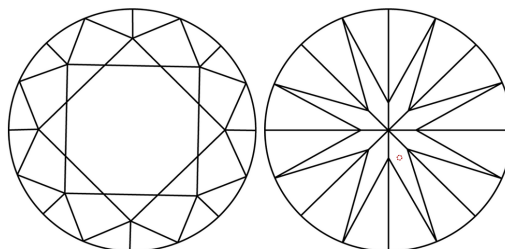
LG674520496  
Report verification at [igi.org](https://igi.org)

## PROPORTIONS



Sample Image Used

## CLARITY CHARACTERISTICS



## KEY TO SYMBOLS

Red symbols indicate internal characteristics.  
Green symbols indicate external characteristics.



**www.igi.org**

## LABORATORY GROWN DIAMOND REPORT



|                         |                          |
|-------------------------|--------------------------|
| January 8, 2025         |                          |
| IGI Report Number       | LG674520496              |
| Description             | LABORATORY GROWN DIAMOND |
| Shape and Cutting Style | ROUND BRILLIANT          |
| Measurements            | 10.98 - 11.01 X 6.82 MM  |
| GRADING RESULTS         |                          |
| Carat Weight            | 5.10 CARATS              |
| Color Grade             | D                        |
| Clarity Grade           | VVS 1                    |
| Cut Grade               | IDEAL                    |

### ADDITIONAL GRADING INFORMATION

|                |                  |
|----------------|------------------|
| Polish         | EXCELLENT        |
| Symmetry       | EXCELLENT        |
| Fluorescence   | NONE             |
| Inscription(s) | (16) LG674520496 |

Comments: HEARTS & ARROWS  
As Grown - No indication of post-growth treatment.  
This Laboratory Grown Diamond was created by High  
Pressure High Temperature (HPHT) growth process.  
Type II



## COLOR

D E F G H I J Faint Very Light Light

## CLARITY

IF WS<sup>1-2</sup> VS<sup>1-2</sup> SI<sup>1-2</sup> |<sup>1-3</sup>

| Internally<br>Flawless | Very Very<br>Slightly Included | Very<br>Slightly Included | Slightly<br>Included | Included |
|------------------------|--------------------------------|---------------------------|----------------------|----------|
|------------------------|--------------------------------|---------------------------|----------------------|----------|

© IGI 2020, International Gemological Institute

FD - 10 20



THIS DOCUMENT WAS PRODUCED WITH THE FOLLOWING SECURITY MEASURES: SPECIAL DOCUMENT PAPER, INK SCREENS, WATERMARK, BACKGROUND DESIGNS, HOLOGRAM AND OTHER SECURITY FEATURES NOT LISTED AND DO EXCEED DOCUMENT SECURITY INDUSTRY GUIDELINE

January 8, 2025  
GI Report No LG674520496  
ROUND BRILLIANT

|                         |               |                                    |
|-------------------------|---------------|------------------------------------|
| 10.98 - 11.01 X 6.82 MM | Carat Weight  | 5.10 CARATS                        |
|                         | Color Grade   | D                                  |
|                         | Clarity Grade | VVS 1                              |
|                         | Cut Grade     | IDEAL                              |
|                         | Depth         | 62%                                |
|                         | Table         | 58%                                |
|                         | Grade         | Medium to Slightly Thick (Faceted) |
|                         | Culet         | Pointed                            |
|                         | Polish        | EXCELLENT                          |
|                         | Symmetry      | EXCELLENT                          |
|                         | Fluorescence  | NONE                               |
|                         |               | gem 1257149046                     |

**Comments:**  
HEARTS & ARROWS  
As Grown - No indication of post-growth treatment.  
This Laboratory Grown Diamond was created by High Pressure High temperature (HPHT) growth process.