



**INTERNATIONAL
GEMOLOGICAL
INSTITUTE**

ELECTRONIC COPY

LG674520432
Report verification at igi.org

LABORATORY GROWN DIAMOND REPORT



January 3, 2025

IGI Report Number **LG674520432**Description **LABORATORY GROWN DIAMOND**Shape and Cutting Style **PEAR BRILLIANT**

Measurements **14.47 X 9.13 X 5.60 MM**

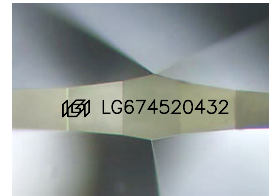
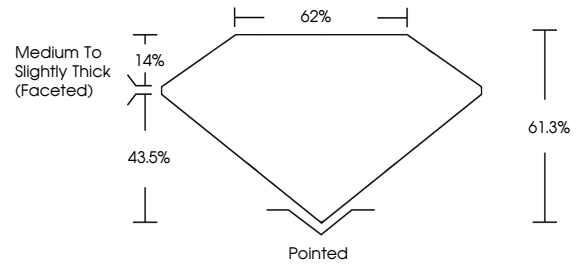
GRADING RESULTS

Carat Weight **4.42 CARATS**

Color Grade **D**

Clarity Grade VS 1

PROPORTIONS



Sample Image Used

COLOR

D E F G H I J Faint Very Light Light

CLARITY

IF WS¹⁻² VS¹⁻² SI¹⁻² I¹⁻³

Internally Flawless	Very Very Slightly Included	Very Slightly Included	Slightly Included	Included
------------------------	--------------------------------	---------------------------	----------------------	----------

ADDITIONAL GRADING INFORMATION

Polish **EXCELLENT**Symmetry **EXCELLENT**Fluorescence **NONE**Inscription(s)  LG674520432

Comments: This Laboratory Grown Diamond was created by Chemical Vapor Deposition (CVD) growth process.
Type IIa



IGI



© IGI 2020, International Gemological Institute

FD - 10 20

www.igi.org



THIS DOCUMENT WAS PRODUCED WITH THE FOLLOWING SECURITY MEASURES: SPECIAL DOCUMENT PAPER, INK SCREENS, WATERMARK, BACKGROUND DESIGNS, HOLOGRAM AND OTHER SECURITY FEATURES NOT LISTED AND DO EXCEED DOCUMENT SECURITY INDUSTRY GUIDELINES

January 3, 2025
IGI Report No LG674520432
PEAR BRILLIANT

14.47 X 9.13 X 5.60 MM	Carat Weight	4.42 CARATS
	Color Grade	D
	Clarity Grade	VS 1
	Depth	61.3%
	Table	62%
	Girdle	Medium To Slightly Thick (Faceted)
	Culet	Pointed
	Polish	EXCELLENT
	Symmetry	EXCELLENT
	Fluorescence	NONE
	Inscriptions(s)	1691 LG6745204332

Comments:
This Laboratory Grown Diamond was created by Chemical Vapor Deposition (CVD) growth process, Type IIa