



# INTERNATIONAL GEMOLOGICAL INSTITUTE

ELECTRONIC COPY

LG674510176



January 3, 2025

IGI Report Number LG674510176

ROUND BRILLIANT

LABORATORY GROWN DIAMOND

5.38 - 5.41 X 3.31 MM

Carat Weight 0.59 CARAT

Color Grade D

Clarity Grade VVS 2

Cut Grade IDEAL

Polish EXCELLENT

Symmetry EXCELLENT

Fluorescence NONE

Inscription(s) IGI LG674510176

Comments: HEARTS & ARROWS This

Laboratory Grown Diamond was

created by Chemical Vapor

Deposition (CVD) growth process.

Type Ila

## LABORATORY GROWN DIAMOND REPORT

January 3, 2025

IGI Report Number

LG674510176

Description

LABORATORY GROWN DIAMOND

Shape and Cutting Style

ROUND BRILLIANT

Measurements

5.38 - 5.41 X 3.31 MM

### GRADING RESULTS

Carat Weight

0.59 CARAT

Color Grade

D

Clarity Grade

VVS 2

Cut Grade

IDEAL

### ADDITIONAL GRADING INFORMATION

Polish

EXCELLENT

Symmetry

EXCELLENT

Fluorescence

NONE

Inscription(s)

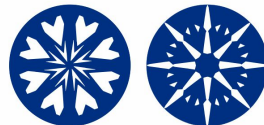
IGI LG674510176

Comments: HEARTS & ARROWS

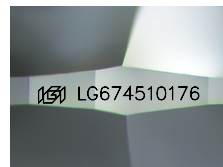
This Laboratory Grown Diamond was created by Chemical Vapor

Deposition (CVD) growth process.

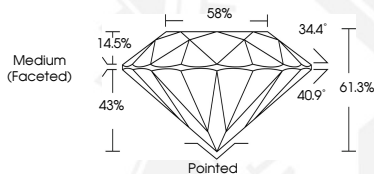
Type Ila



HEARTS & ARROWS



Sample Image Used



January 3, 2025

IGI Report Number LG674510176

ROUND BRILLIANT

LABORATORY GROWN DIAMOND

5.38 - 5.41 X 3.31 MM

Carat Weight 0.59 CARAT

Color Grade D

Clarity Grade VVS 2

Cut Grade IDEAL

Polish EXCELLENT

Symmetry EXCELLENT

Fluorescence NONE

Inscription(s) IGI LG674510176

Comments: HEARTS & ARROWS This

Laboratory Grown Diamond was

created by Chemical Vapor

Deposition (CVD) growth process.

Type Ila



THIS DOCUMENT WAS PRODUCED WITH THE FOLLOWING SECURITY MEASURES: SPECIAL DOCUMENT PAPER, INK SCREENS, WATERMARK, BACKGROUND DESIGNS, HOLOGRAM AND OTHER SECURITY FEATURES NOT LISTED AND DO EXCEED DOCUMENT SECURITY INDUSTRY GUIDELINES.

For terms & conditions and to verify this report, please visit [www.igi.org](http://www.igi.org)