



**ELECTRONIC COPY**

LG674501464  
Report verification at igi.org



January 6, 2025  
IGI Report Number **LG674501464**  
Description **LABORATORY GROWN DIAMOND**  
Shape and Cutting Style **ROUND BRILLIANT**  
Measurements **7.70 - 7.72 X 4.84 MM**  
**GRADING RESULTS**  
Carat Weight **1.75 CARAT**  
Color Grade **E**  
Clarity Grade **VS 1**  
Cut Grade **EXCELLENT**

January 6, 2025  
IGI Report Number **LG674501464**  
Description **LABORATORY GROWN DIAMOND**  
Shape and Cutting Style **ROUND BRILLIANT**  
Measurements **7.70 - 7.72 X 4.84 MM**

**GRADING RESULTS**

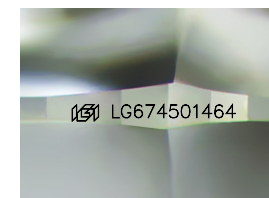
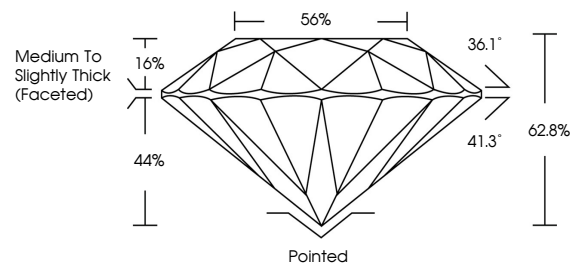
Carat Weight **1.75 CARAT**  
Color Grade **E**  
Clarity Grade **VS 1**  
Cut Grade **EXCELLENT**

**ADDITIONAL GRADING INFORMATION**

Polish **EXCELLENT**  
Symmetry **EXCELLENT**  
Fluorescence **NONE**  
Inscription(s) **IGI LG674501464**

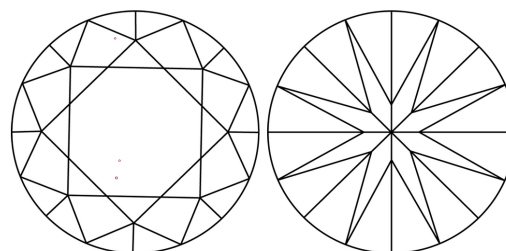
Comments: This Laboratory Grown Diamond was created by Chemical Vapor Deposition (CVD) growth process.  
Type IIa

**PROPORTIONS**



Sample Image Used

**CLARITY CHARACTERISTICS**



**KEY TO SYMBOLS**

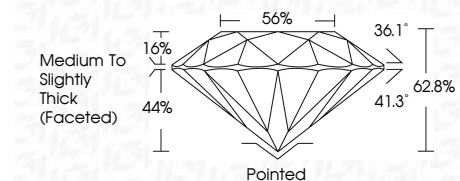
Red symbols indicate internal characteristics.  
Green symbols indicate external characteristics.

**COLOR**

D E F G H I J Faint Very Light Light

**CLARITY**

IF	VS <sup>1-2</sup>	VS <sup>1-2</sup>	SI <sup>1-2</sup>	I <sup>1-3</sup>
Internally Flawless	Very Very Slightly Included	Very Slightly Included	Slightly Included	Included



**ADDITIONAL GRADING INFORMATION**

Polish **EXCELLENT**  
Symmetry **EXCELLENT**  
Fluorescence **NONE**  
Inscription(s) **IGI LG674501464**  
Comments: This Laboratory Grown Diamond was created by Chemical Vapor Deposition (CVD) growth process.  
Type IIa



**IGI**



January 6, 2025  
IGI Report No LG674501464  
**ROUND BRILLIANT**  
7.70 - 7.72 X 4.84 MM  
1.75 CARAT  
E  
VS 1  
EXCELLENT  
62.8%  
56%  
Medium To Slightly Thick (Faceted)  
Pointed  
EXCELLENT  
EXCELLENT  
NONE  
IGI LG674501464  
Comments: This Laboratory Grown Diamond was created by Chemical Vapor Deposition (CVD) growth process.  
Type IIa