



ELECTRONIC COPY

LG673430601
Report verification at igi.org



January 10, 2025
IGI Report Number **LG673430601**
Description **LABORATORY GROWN DIAMOND**
Shape and Cutting Style **CUSHION MODIFIED BRILLIANT**
Measurements **13.78 X 10.33 X 7.27 MM**
GRADING RESULTS
Carat Weight **10.04 CARATS**
Color Grade **FANCY VIVID PINK**
Clarity Grade **SI 1**

LABORATORY GROWN DIAMOND REPORT

January 10, 2025
IGI Report Number **LG673430601**
Description **LABORATORY GROWN DIAMOND**
Shape and Cutting Style **CUSHION MODIFIED BRILLIANT**
Measurements **13.78 X 10.33 X 7.27 MM**

GRADING RESULTS

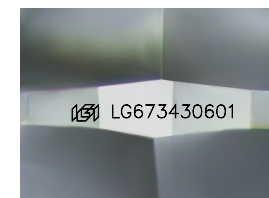
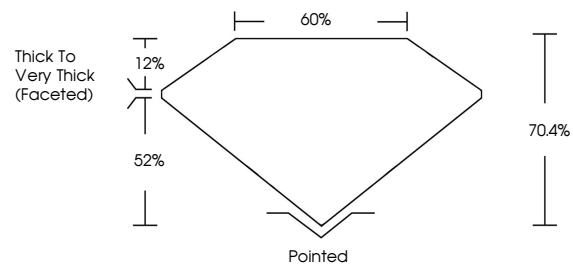
Carat Weight **10.04 CARATS**
Color Grade **FANCY VIVID PINK**
Clarity Grade **SI 1**

ADDITIONAL GRADING INFORMATION

Polish **VERY GOOD**
Symmetry **VERY GOOD**
Fluorescence **SLIGHT**
Inscription(s) **LG673430601**

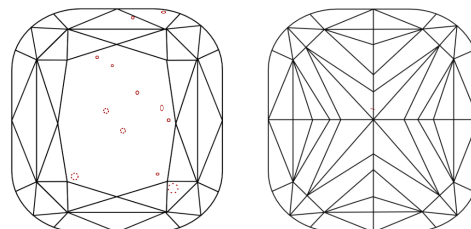
Comments: This Laboratory Grown Diamond was created by Chemical Vapor Deposition (CVD) growth process. Indications of post-growth treatment.

PROPORTIONS



Sample Image Used

CLARITY CHARACTERISTICS



KEY TO SYMBOLS

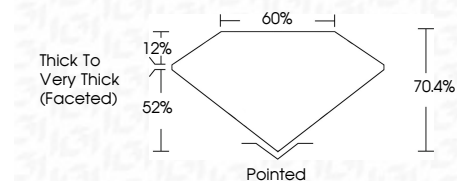
Red symbols indicate internal characteristics.
Green symbols indicate external characteristics.

COLOR

D E F G H I J Faint Very Light Light

CLARITY

IF	VS ¹⁻²	VS ¹⁻²	SI ¹⁻²	I ¹⁻³
Internally Flawless	Very Very Slightly Included	Very Slightly Included	Slightly Included	Included



ADDITIONAL GRADING INFORMATION

Polish **VERY GOOD**
Symmetry **VERY GOOD**
Fluorescence **SLIGHT**
Inscription(s) **LG673430601**
Comments: This Laboratory Grown Diamond was created by Chemical Vapor Deposition (CVD) growth process. Indications of post-growth treatment.



January 10, 2025
IGI Report No **LG673430601**
CUSHION MODIFIED BRILLIANT
13.78 X 10.33 X 7.27 MM
Carat Weight **10.04 CARATS**
Color Grade **FANCY VIVID PINK**
Clarity Grade **SI 1**
Depth **70.4%**
Table **12%**
Girdle **Thick to Very Thick (Faceted)**
Culet **Pointed**
Polish **VERY GOOD**
Symmetry **VERY GOOD**
Fluorescence **SLIGHT**
Inscription(s) **LG673430601**
Comments: This Laboratory Grown Diamond was created by Chemical Vapor Deposition (CVD) growth process. Indications of post-growth treatment.