



ELECTRONIC COPY

LG673430280
Report verification at igi.org



January 6, 2025
IGI Report Number **LG673430280**
Description **LABORATORY GROWN DIAMOND**
Shape and Cutting Style **CUT CORNERED
RECTANGULAR MODIFIED
BRILLIANT**
Measurements **11.27 X 7.79 X 5.29 MM**
GRADING RESULTS
Carat Weight **4.06 CARATS**
Color Grade **F**
Clarity Grade **SI 1**

LABORATORY GROWN DIAMOND REPORT

January 6, 2025
IGI Report Number **LG673430280**
Description **LABORATORY GROWN DIAMOND**
Shape and Cutting Style **CUT CORNERED RECTANGULAR
MODIFIED BRILLIANT**
Measurements **11.27 X 7.79 X 5.29 MM**

GRADING RESULTS

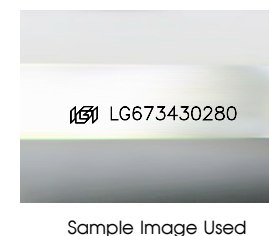
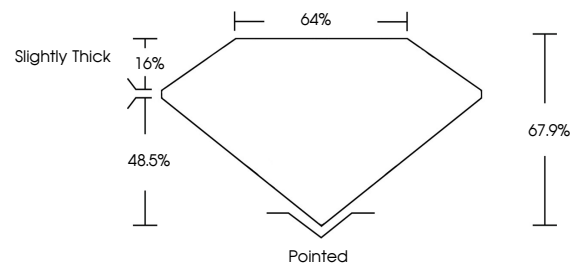
Carat Weight **4.06 CARATS**
Color Grade **F**
Clarity Grade **SI 1**

ADDITIONAL GRADING INFORMATION

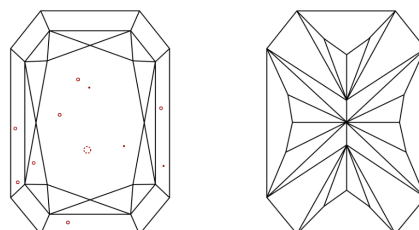
Polish **EXCELLENT**
Symmetry **EXCELLENT**
Fluorescence **NONE**
Inscription(s) **IGI LG673430280**

Comments: This Laboratory Grown Diamond was created by Chemical Vapor Deposition (CVD) growth process.
Type IIa

PROPORTIONS



CLARITY CHARACTERISTICS



KEY TO SYMBOLS

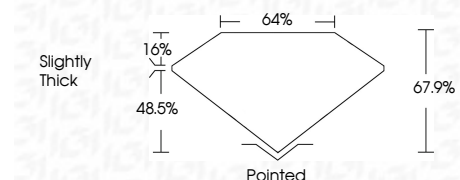
Red symbols indicate internal characteristics.
Green symbols indicate external characteristics.

COLOR

D E F G H I J Faint Very Light Light

CLARITY

IF VS¹⁻² VS¹⁻² SI¹⁻² I¹⁻³
Internally Flawless Very Very Slightly Included Very Slightly Included Slightly Included Included



ADDITIONAL GRADING INFORMATION

Polish **EXCELLENT**
Symmetry **EXCELLENT**
Fluorescence **NONE**
Inscription(s) **IGI LG673430280**
Comments: This Laboratory Grown Diamond was created by Chemical Vapor Deposition (CVD) growth process.
Type IIa



January 6, 2025
IGI Report No **LG673430280**
CUT CORNERED RECT. MODIFIED BRILLIANT
4.06 CARATS
F
SI 1
48.5%
67.9%
1.6%
Slightly Thick
Pointed
EXCELLENT
EXCELLENT
NONE
IGI LG673430280
Comments: This Laboratory Grown Diamond was created by Chemical Vapor Deposition (CVD) growth process.
Type IIa