



**ELECTRONIC COPY**

## LABORATORY GROWN DIAMOND REPORT

January 2, 2025	
IGI Report Number	LG673413363
Description	LABORATORY GROWN DIAMOND
Shape and Cutting Style	CUT CORNERED RECTANGULAR MODIFIED BRILLIANT
Measurements	8.38 X 5.80 X 3.83 MM

## GRADING RESULTS

Carat Weight	1.57 CARAT
Color Grade	D
Clarity Grade	VVS 2

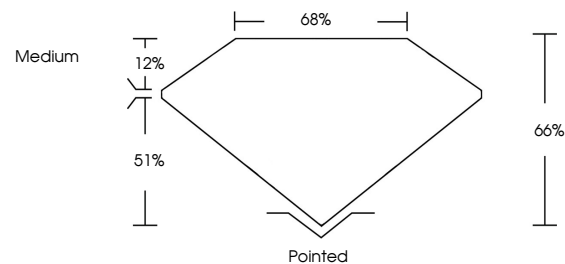
### ADDITIONAL GRADING INFORMATION

Polish	EXCELLENT
Symmetry	EXCELLENT
Fluorescence	NONE
Inscription(s)	 LG673413363

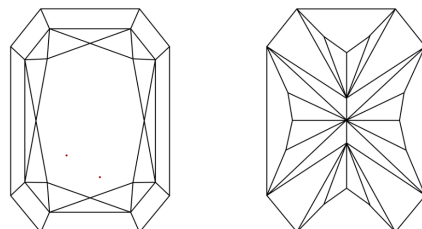
Comments: This Laboratory Grown Diamond was created by Chemical Vapor Deposition (CVD) growth process.  
Type IIa

LG673413363  
Report verification at lgi.org

## PROPORTIONS

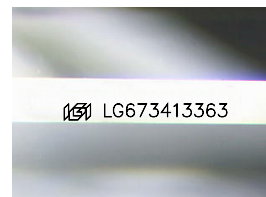


## CLARITY CHARACTERISTICS



## KEY TO SYMBOLS

Red symbols indicate internal characteristics.  
Green symbols indicate external characteristics.



Sample Image Used

**COLOR**

D E F G H I J Faint Very Light Light

## CLARITY

IF	VS <sup>1-2</sup>	VS <sup>1-2</sup>	SI <sup>1-2</sup>	I <sup>1-3</sup>
Internally Flawless	Very Very Slightly Included	Very Slightly Included	Slightly Included	Included

## LABORATORY GROWN DIAMOND REPORT

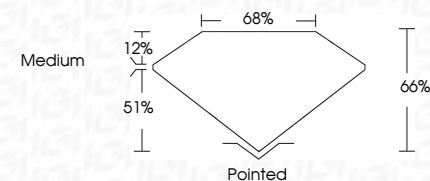


January 2, 2025	
IGI Report Number	LG673413363
Description	LABORATORY GROWN DIAMOND
Shape and Cutting Style	CUT CORNERED RECTANGULAR MODIFIED BRILLIANT

Measurements **8.38 X 5.80 X 3.83 MM**

## GRADING RESULTS

Carat Weight	1.57 CARAT
Color Grade	D
Clarity Grade	VVS 2



### ADDITIONAL GRADING INFORMATION

Polish	EXCELLENT
Symmetry	EXCELLENT
Fluorescence	NONE
Inscription(s)	 LG673413363
Comments: This Laboratory Grown Diamond was created by Chemical Vapor Deposition (CVD) growth process.	
Type IIa	



© IGI 2020, International Gemological Institute

FD - 10 20

**www.igi.org**

THIS DOCUMENT WAS PRODUCED WITH THE FOLLOWING SECURITY MEASURES: SPECIAL DOCUMENT PAPER, INK SCREENS, WATERMARK, BACKGROUND DESIGNS, HOLOGRAM AND OTHER SECURITY FEATURES NOT LISTED AND DO EXCEED DOCUMENT SECURITY INDUSTRY GUIDELINE

<b>G Report No</b>	<b>L6573413363</b>
<b>CUT CORNERED RECT.</b>	<b>MODIFIED BRILLIANT</b>
<b>Weight</b>	<b>0.98 Carat Weight</b>
<b>Diameter</b>	<b>6.50 X 6.00 X 3.93 MM</b>
<b>Color</b>	<b>Grade D</b>
<b>Clarity</b>	<b>Grade VS 2</b>
<b>Depth</b>	<b>66%</b>
<b>Table</b>	<b>66%</b>
<b>Grain</b>	<b>Medium</b>
<b>Pole</b>	<b>Pointed</b>
<b>Polish</b>	<b>EXCELLENT</b>
<b>Symmetry</b>	<b>NONE</b>
<b>Fluorescence</b>	<b>None</b>
<b>Annotations</b>	<b>#681 C5273413363</b>

**Comments:**  
This Laboratory Grown Diamond was  
created by Chemical Vapor Deposition  
(CVD) growth process.