



ELECTRONIC COPY

LG672401195
Report verification at igi.org



January 9, 2025
IGI Report Number **LG672401195**
Description **LABORATORY GROWN DIAMOND**
Shape and Cutting Style **ROUND BRILLIANT**
Measurements **7.09 - 7.14 X 4.50 MM**
GRADING RESULTS
Carat Weight **1.41 CARAT**
Color Grade **FANCY INTENSE PINK**
Clarity Grade **VVS 2**
Cut Grade **EXCELLENT**

January 9, 2025
IGI Report Number **LG672401195**
Description **LABORATORY GROWN DIAMOND**
Shape and Cutting Style **ROUND BRILLIANT**
Measurements **7.09 - 7.14 X 4.50 MM**

GRADING RESULTS

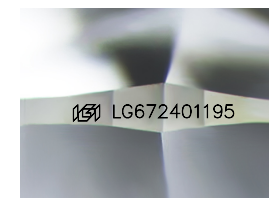
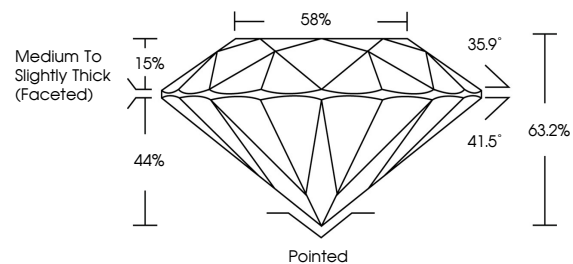
Carat Weight **1.41 CARAT**
Color Grade **FANCY INTENSE PINK**
Clarity Grade **VVS 2**
Cut Grade **EXCELLENT**

ADDITIONAL GRADING INFORMATION

Polish **EXCELLENT**
Symmetry **EXCELLENT**
Fluorescence **SLIGHT**
Inscription(s) **IGI LG672401195**

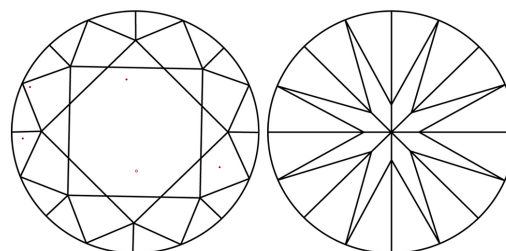
Comments: This Laboratory Grown Diamond was created by Chemical Vapor Deposition (CVD) growth process.
Indications of post-growth treatment.

PROPORTIONS



Sample Image Used

CLARITY CHARACTERISTICS



KEY TO SYMBOLS

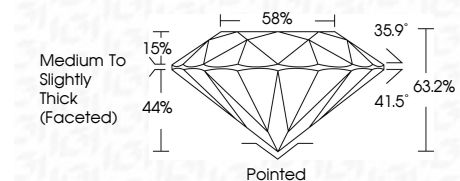
Red symbols indicate internal characteristics.
Green symbols indicate external characteristics.

COLOR

D E F G H I J Faint Very Light Light

CLARITY

IF	VS ¹⁻²	VS ¹⁻²	SI ¹⁻²	I ¹⁻³
Internally Flawless	Very Very Slightly Included	Very Slightly Included	Slightly Included	Included



ADDITIONAL GRADING INFORMATION

Polish **EXCELLENT**
Symmetry **EXCELLENT**
Fluorescence **SLIGHT**
Inscription(s) **IGI LG672401195**
Comments: This Laboratory Grown Diamond was created by Chemical Vapor Deposition (CVD) growth process.
Indications of post-growth treatment.



January 9, 2025
IGI Report No LG672401195
ROUND BRILLIANT
1.41 CARAT
FANCY INTENSE PINK
VVS 2
EXCELLENT
63.2%
88%
Medium To Slightly Thick (Faceted)
Pointed
EXCELLENT
EXCELLENT
SLIGHT
IGI LG672401195
Comments: This Laboratory Grown Diamond was created by Chemical Vapor Deposition (CVD) growth process.
Indications of post-growth treatment.