



# INTERNATIONAL GEMOLOGICAL INSTITUTE

ELECTRONIC COPY

LG671496333



December 31, 2024

IGI Report Number LG671496333  
ROUND BRILLIANT  
LABORATORY GROWN DIAMOND  
6.44 - 6.46 X 3.82 MM

Carat Weight 0.96 CARAT  
Color Grade E  
Clarity Grade VS 2  
Cut Grade IDEAL  
Polish EXCELLENT  
Symmetry EXCELLENT  
Fluorescence NONE  
Inscription(s) IGI LG671496333

Comments: This Laboratory Grown Diamond was created by Chemical Vapor Deposition (CVD) growth process. Type IIa

## LABORATORY GROWN DIAMOND REPORT

December 31, 2024

IGI Report Number

LG671496333

Description

LABORATORY GROWN DIAMOND

Shape and Cutting Style

ROUND BRILLIANT

Measurements

6.44 - 6.46 X 3.82 MM

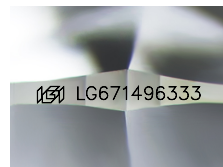
### GRADING RESULTS

Carat Weight 0.96 CARAT  
Color Grade E  
Clarity Grade VS 2  
Cut Grade IDEAL

### ADDITIONAL GRADING INFORMATION

Polish EXCELLENT  
Symmetry EXCELLENT  
Fluorescence NONE  
Inscription(s) IGI LG671496333

Comments: This Laboratory Grown Diamond was created by Chemical Vapor Deposition (CVD) growth process. Type IIa



Sample Image Used

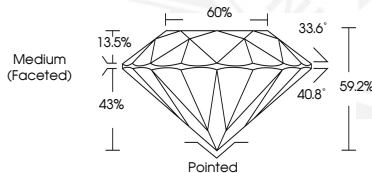


December 31, 2024

IGI Report Number LG671496333  
ROUND BRILLIANT  
LABORATORY GROWN DIAMOND  
6.44 - 6.46 X 3.82 MM

Carat Weight 0.96 CARAT  
Color Grade E  
Clarity Grade VS 2  
Cut Grade IDEAL  
Polish EXCELLENT  
Symmetry EXCELLENT  
Fluorescence NONE  
Inscription(s) IGI LG671496333

Comments: This Laboratory Grown Diamond was created by Chemical Vapor Deposition (CVD) growth process. Type IIa



THIS DOCUMENT WAS PRODUCED WITH THE FOLLOWING SECURITY MEASURES: SPECIAL DOCUMENT PAPER, INK SCREENS, WATERMARK, BACKGROUND DESIGNS, HOLOGRAM AND OTHER SECURITY FEATURES NOT LISTED AND DO EXCEED DOCUMENT SECURITY INDUSTRY GUIDELINES.

For terms & conditions and to verify this report, please visit [www.igi.org](http://www.igi.org)