

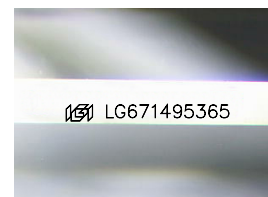
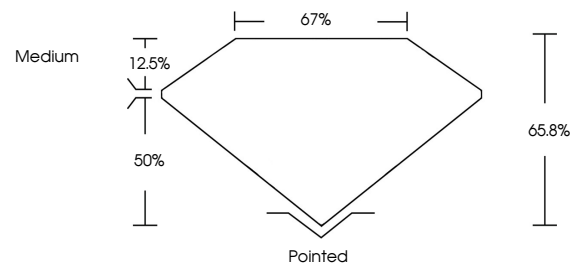


ELECTRONIC COPY

LABORATORY GROWN DIAMOND REPORT

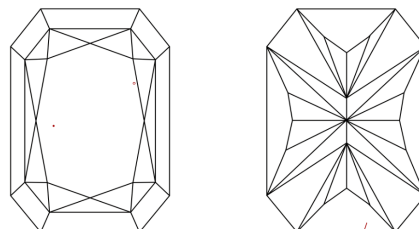
LG671495365
Report verification at lgi.org

PROPORTIONS



Sample Image Used

CLARITY CHARACTERISTICS



KEY TO SYMBOLS

Red symbols indicate internal characteristics.
Green symbols indicate external characteristics.

COLOR

D E F G H I J Faint Very Light Light

CLARITY

IF VWS¹⁻² VS¹⁻² SI¹⁻² I¹⁻³

Internally Flawless	Very Very Slightly Included	Very Slightly Included	Slightly Included	Included
------------------------	--------------------------------	---------------------------	----------------------	----------

LABORATORY GROWN DIAMOND REPORT



December 31, 2024

IGI Report Number LG671495365

Description **LABORATORY GROWN DIAMOND**

Shape and Cutting Style

CUT CORNERED
RECTANGULAR MODIFIED
BRILLIANT

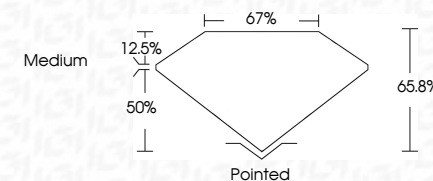
Measurements 8.17 X 5.70 X 3.75 MM

GRADING RESULTS

Carat Weight 1.51 CARAT

Color Grade

Clarity Grade VS 1



ADDITIONAL GRADING INFORMATION

Polish **EXCELLENT**Symmetry **EXCELLENT**Fluorescence NONEInscription(s) LG671495365

Comments: This Laboratory Grown Diamond was created by Chemical Vapor Deposition (CVD) growth process.
Type IIa



© IGI 2020, International Gemological Institute

FD - 10 20

www.igi.org

December 31, 2024	
GJ Report No LG27469345	
CUT CORNERED RECT. MODIFIED BRILLIANT	
W 17 X H 9 X D 3.75 MM	
Carat Weight	1.51 CARAT
Color Grade	D
Clarity Grade	VS 1
Depth	68.9%
Table	67%
Girdle	Medium
Culet	Pointed
Patch	EXCELLENT
Symmetry	EXCELLENT
Fluorescence	NONE
Inscriptions(s)	lgj LG27469345

Comments:
The Laboratory Grown Diamond was
analyzed by Laser Vapor Deposition
(LVD) growth process.
Type IIG