



ELECTRONIC COPY

LG671492164
Report verification at igi.org



January 13, 2025

IGI Report Number **LG671492164**

Description **LABORATORY GROWN DIAMOND**

Shape and Cutting Style **ROUND BRILLIANT**

Measurements **7.79 - 7.81 X 4.81 MM**

GRADING RESULTS

Carat Weight **1.80 CARAT**

Color Grade **F**

Clarity Grade **VS 2**

Cut Grade **IDEAL**

January 13, 2025
IGI Report Number **LG671492164**
Description **LABORATORY GROWN DIAMOND**
Shape and Cutting Style **ROUND BRILLIANT**
Measurements **7.79 - 7.81 X 4.81 MM**

GRADING RESULTS

Carat Weight **1.80 CARAT**

Color Grade **F**

Clarity Grade **VS 2**

Cut Grade **IDEAL**

ADDITIONAL GRADING INFORMATION

Polish **EXCELLENT**

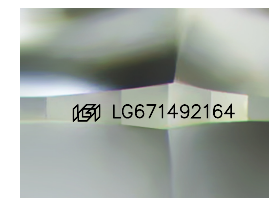
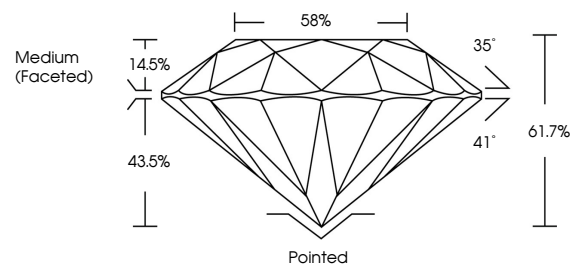
Symmetry **EXCELLENT**

Fluorescence **NONE**

Inscription(s) **IGI LG671492164**

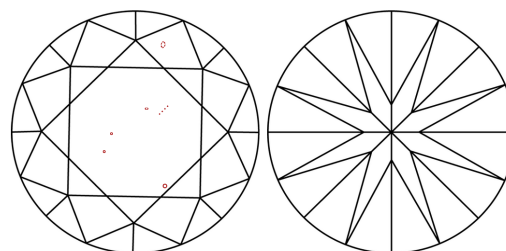
Comments: This Laboratory Grown Diamond was created by Chemical Vapor Deposition (CVD) growth process.
Type IIa

PROPORTIONS



Sample Image Used

CLARITY CHARACTERISTICS



KEY TO SYMBOLS

Red symbols indicate internal characteristics.
Green symbols indicate external characteristics.

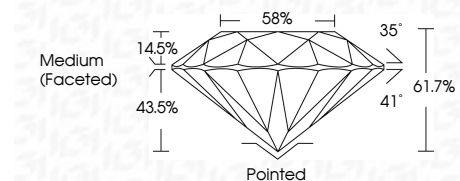
COLOR

D E F G H I J Faint Very Light Light

CLARITY

IF WS¹⁻² VS¹⁻² SI¹⁻² I¹⁻³

Internally Flawless Very Very Slightly Included Very Slightly Included Slightly Included Included



ADDITIONAL GRADING INFORMATION

Polish **EXCELLENT**

Symmetry **EXCELLENT**

Fluorescence **NONE**

Inscription(s) **IGI LG671492164**

Comments: This Laboratory Grown Diamond was created by Chemical Vapor Deposition (CVD) growth process.
Type IIa



| | | | | | | | | | | | | |
|---------------------------|-----------------------|-------------|---------------|-----------|-------|-------|------------------|---------|-----------|-----------|--------------|-----------------|
| January 13, 2025 | 1.80 CARAT | F | VS 2 | IDEAL | 61.7% | 58% | Medium (Faceted) | Pointed | EXCELLENT | EXCELLENT | NONE | IGI LG671492164 |
| IGI Report No LG671492164 | Carat Weight | Color Grade | Clarity Grade | Cut Grade | Depth | Table | Grade | Culet | Polish | Symmetry | Fluorescence | Inscription(s) |
| ROUND BRILLIANT | 7.79 - 7.81 X 4.81 MM | F | VS 2 | IDEAL | 61.7% | 58% | Medium (Faceted) | Pointed | EXCELLENT | EXCELLENT | NONE | IGI LG671492164 |

Comments: This Laboratory Grown Diamond was created by Chemical Vapor Deposition (CVD) growth process.
Type IIa