

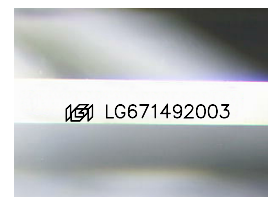
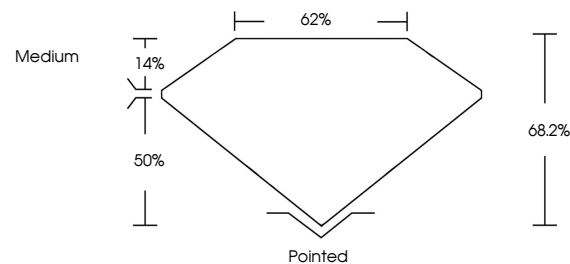


ELECTRONIC COPY

LABORATORY GROWN DIAMOND REPORT

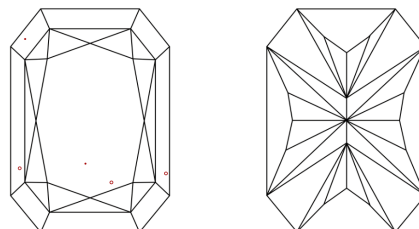
LG671492003
Report verification at lqi.org

PROPORTIONS



Sample Image Used

CLARITY CHARACTERISTICS



KEY TO SYMBOLS

Red symbols indicate internal characteristics.
Green symbols indicate external characteristics.

COLOR

D E F G H I J Faint Very Light Light

CLARITY

IF VWS¹⁻² VS¹⁻² SI¹⁻² I¹⁻³

Internally Flawless	Very Very Slightly Included	Very Slightly Included	Slightly Included	Included
------------------------	--------------------------------	---------------------------	----------------------	----------

LABORATORY GROWN DIAMOND REPORT



December 31, 2024

IGI Report Number **LG671492003**Description **LABORATORY GROWN DIAMOND**

Shape and Cutting Style

CUT CORNERED
RECTANGULAR MODIFIED
BRILLIANT

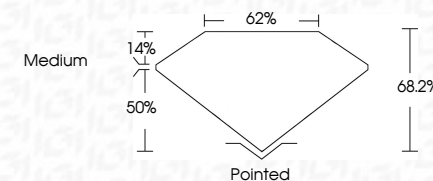
Measurements 11.76 X 8.50 X 5.80 MM

GRADING RESULTS

Carat Weight **5.09 CARATS**

Color Grade E

Clarity Grade VS 1



ADDITIONAL GRADING INFORMATION

Polish **EXCELLENT**Symmetry **EXCELLENT**Fluorescence NONEInscription(s) LG671492003

Comments: This Laboratory Grown Diamond was created by Chemical Vapor Deposition (CVD) growth process.
Type IIa



© IGI 2020, International Gemological Institute

FD - 10 20

www.igi.org

December 31, 2024	Carat Weight	5.09 CARATS
CU Report No. LG571422003	Color Grade	E
CU CORNERED RECT. MODIFIED BRILLIANT	Clarity Grade	VS 1
1.176 X 8.50 X 5.80 MM	Depth	64.2%
	Table	62%
	Girdle	Medium
	Culet	Pointed
	Polish	EXCELLENT
	Symmetry	EXCELLENT
	Fluorescence	NONE
	Inscriptions(s)	4891 LG571422003

Comments:
 The Laboratory Grown Diamond was
 analyzed by the Thermal Vapor Deposition
 (TVD) growth process.
 type IIG