



ELECTRONIC COPY

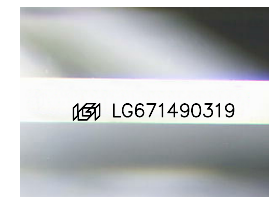
LG671490319
Report verification at igi.org



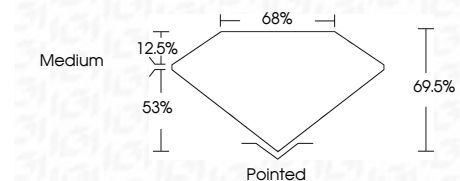
December 31, 2024
IGI Report Number **LG671490319**
Description **LABORATORY GROWN DIAMOND**
Shape and Cutting Style **PRINCESS CUT**
Measurements **5.93 X 5.77 X 4.01 MM**

GRADING RESULTS

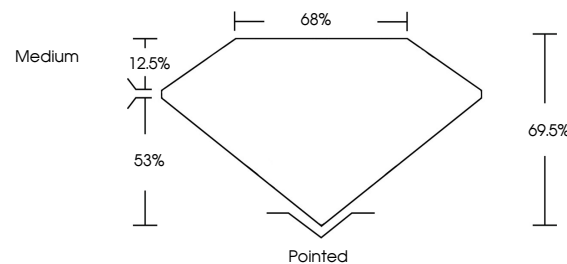
Carat Weight **1.25 CARAT**
Color Grade **E**
Clarity Grade **VS 1**



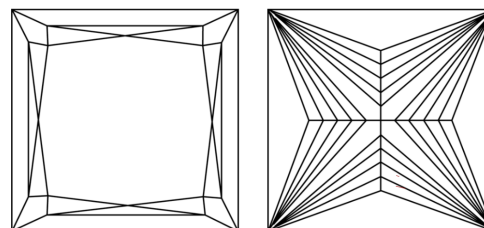
Sample Image Used



PROPORTIONS



CLARITY CHARACTERISTICS



KEY TO SYMBOLS

Red symbols indicate internal characteristics.
Green symbols indicate external characteristics.

COLOR

D E F G H I J Faint Very Light Light

CLARITY

IF	VS ¹⁻²	VS ¹⁻²	SI ¹⁻²	I ¹⁻³
Internally Flawless	Very Very Slightly Included	Very Slightly Included	Slightly Included	Included

ADDITIONAL GRADING INFORMATION

Polish **EXCELLENT**
Symmetry **EXCELLENT**
Fluorescence **NONE**
Inscription(s) **IGI LG671490319**
Comments: This Laboratory Grown Diamond was created by Chemical Vapor Deposition (CVD) growth process.
Type IIa



IGI



December 31, 2024
IGI Report No LG671490319
PRINCESS CUT
5.93 X 5.77 X 4.01 MM
1.25 CARAT
E
VS 1
69.5%
53%
12.5%
Medium
Pointed
EXCELLENT
EXCELLENT
NONE
IGI LG671490319
Comments: This Laboratory Grown Diamond was created by Chemical Vapor Deposition (CVD) growth process.
Type IIa