



ELECTRONIC COPY

LG671489070
Report verification at igi.org



January 9, 2025
IGI Report Number **LG671489070**
Description **LABORATORY GROWN DIAMOND**
Shape and Cutting Style **ROUND BRILLIANT**
Measurements **9.89 - 9.93 X 6.08 MM**
GRADING RESULTS
Carat Weight **3.73 CARATS**
Color Grade **FANCY LIGHT PINK**
Clarity Grade **VS 1**
Cut Grade **IDEAL**

January 9, 2025
IGI Report Number **LG671489070**
Description **LABORATORY GROWN DIAMOND**
Shape and Cutting Style **ROUND BRILLIANT**
Measurements **9.89 - 9.93 X 6.08 MM**

GRADING RESULTS

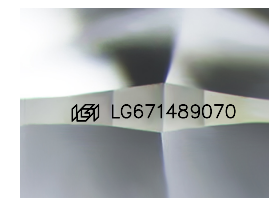
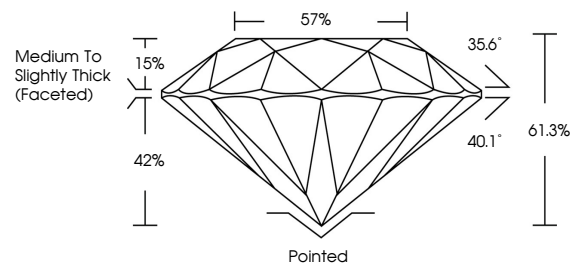
Carat Weight **3.73 CARATS**
Color Grade **FANCY LIGHT PINK**
Clarity Grade **VS 1**
Cut Grade **IDEAL**

ADDITIONAL GRADING INFORMATION

Polish **EXCELLENT**
Symmetry **EXCELLENT**
Fluorescence **SLIGHT**
Inscription(s) **IGI LG671489070**

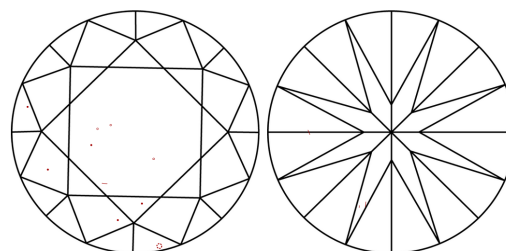
Comments: This Laboratory Grown Diamond was created by Chemical Vapor Deposition (CVD) growth process.
Indications of post-growth treatment.

PROPORTIONS



Sample Image Used

CLARITY CHARACTERISTICS



KEY TO SYMBOLS

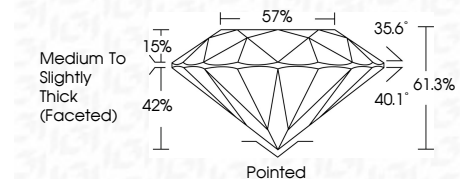
Red symbols indicate internal characteristics.
Green symbols indicate external characteristics.

COLOR

D E F G H I J Faint Very Light Light

CLARITY

IF	VS ¹⁻²	VS ¹⁻²	SI ¹⁻²	I ¹⁻³
Internally Flawless	Very Very Slightly Included	Very Slightly Included	Slightly Included	Included



ADDITIONAL GRADING INFORMATION

Polish **EXCELLENT**
Symmetry **EXCELLENT**
Fluorescence **SLIGHT**
Inscription(s) **IGI LG671489070**
Comments: This Laboratory Grown Diamond was created by Chemical Vapor Deposition (CVD) growth process.
Indications of post-growth treatment.



IGI



January 9, 2025
IGI Report No LG671489070
ROUND BRILLIANT
3.73 CARATS
Carat Weight
Color Grade **FANCY LIGHT PINK**
Clarity Grade **VS 1**
Depth **IDEAL**
Table **61.3%**
Girdle **57%**
Medium To Slightly Thick (Faceted)
Culet **Pointed**
Polish **EXCELLENT**
Symmetry **EXCELLENT**
Fluorescence **SLIGHT**
Inscription(s) **IGI LG671489070**
Comments: This Laboratory Grown Diamond was created by Chemical Vapor Deposition (CVD) growth process.
Indications of post-growth treatment.