

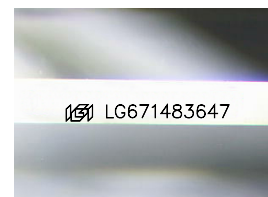
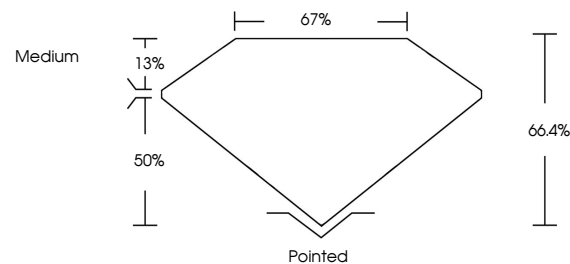


ELECTRONIC COPY

LABORATORY GROWN DIAMOND REPORT

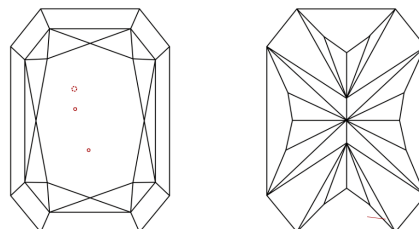
LG671483647
Report verification at igi.org

PROPORTIONS



Sample Image Used

CLARITY CHARACTERISTICS



KEY TO SYMBOLS

Red symbols indicate internal characteristics.
Green symbols indicate external characteristics.

COLOR

D E F G H I J Faint Very Light Light

CLARITY

| IF | VS ¹⁻² | VS ¹⁻² | SI ¹⁻² | I ¹⁻³ |
|---------------------|-----------------------------|------------------------|-------------------|------------------|
| Internally Flawless | Very Very Slightly Included | Very Slightly Included | Slightly Included | Included |

LABORATORY GROWN DIAMOND REPORT



January 3, 2025

IGI Report Number **LG671483647**

| | |
|-------------|--------------------------|
| Description | LABORATORY GROWN DIAMOND |
|-------------|--------------------------|

Shape and Cutting Style

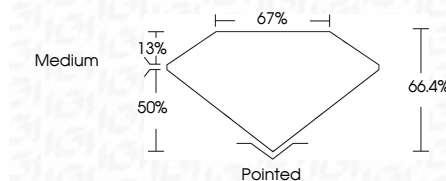
Measurements **8.15 X 5.65 X 3.75 MM**

GRADING RESULTS

Carat Weight 1.52 CARAT

Color Grade D

Clarity Grade VS 1



ADDITIONAL GRADING INFORMATION

Polish **EXCELLENT**Symmetry **EXCELLENT**Fluorescence **NONE**Inscription(s) LG671483647

Comments: This Laboratory Grown Diamond was created by Chemical Vapor Deposition (CVD) growth process.
Type IIa



© IGI 2020, International Gemological Institute

FD - 10 20

www.igi.org

THIS DOCUMENT WAS PRODUCED WITH THE FOLLOWING SECURITY MEASURES: SPECIAL DOCUMENT PAPER, INK SCREENS, WATERMARK, BACKGROUND DESIGNS, HOLOGRAM AND OTHER SECURITY FEATURES NOT LISTED AND DO EXCEED DOCUMENT SECURITY INDUSTRY GUIDELINES

| | | |
|--------------------------------------|-----------------------|-----------------|
| January 3, 2025 | Report No. G527483647 | 1.52 CARAT |
| CU CORNERED RECT. MODIFIED BRILLIANT | Color Grade | D |
| CU CORNERED RECT. MODIFIED BRILLIANT | Clarity Grade | VS 1 |
| CU CORNERED RECT. MODIFIED BRILLIANT | Depth | 64.4% |
| CU CORNERED RECT. MODIFIED BRILLIANT | Table | 67% |
| CU CORNERED RECT. MODIFIED BRILLIANT | Girdle | Medium |
| CU CORNERED RECT. MODIFIED BRILLIANT | Culet | Pointed |
| CU CORNERED RECT. MODIFIED BRILLIANT | Polish | EXCELLENT |
| CU CORNERED RECT. MODIFIED BRILLIANT | Symmetry | EXCELLENT |
| CU CORNERED RECT. MODIFIED BRILLIANT | Fluorescence | NONE |
| CU CORNERED RECT. MODIFIED BRILLIANT | Inscriptions(s) | 4891 G527483647 |

Comments:

The Laboratory Grown Diamond was analyzed by the Laser Vapor Deposition (LVD) growth process.

Type IIG