



**ELECTRONIC COPY**

## LABORATORY GROWN DIAMOND REPORT

LG671480576  
Report verification at [igi.org](https://igi.org)

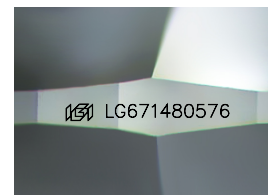
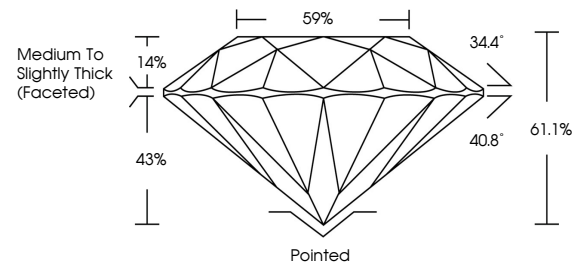
December 31, 2024	
IGI Report Number	LG671480576
Description	LABORATORY GROWN DIAMOND
Shape and Cutting Style	ROUND BRILLIANT
Measurements	10.97 - 11.01 X 6.72 MM
GRADING RESULTS	
Carat Weight	5.04 CARATS
Color Grade	E
Clarity Grade	VS 1
Cut Grade	IDEAL

### ADDITIONAL GRADING INFORMATION

Polish	EXCELLENT
Symmetry	EXCELLENT
Fluorescence	NONE
Inscription(s)	151 LG671480576

Comments: This Laboratory Grown Diamond was created by Chemical Vapor Deposition (CVD) growth process.  
Type IIa

## PROPORTIONS



Sample Image Used

COLOR

D E F G H I J Faint Very Light Light

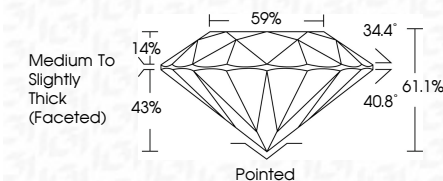
## CLARITY

IF	VS <sup>1-2</sup>	VS <sup>1-2</sup>	SI <sup>1-2</sup>	I <sup>1-3</sup>
Internally Flawless	Very Very Slightly Included	Very Slightly Included	Slightly Included	Included

## LABORATORY GROWN DIAMOND REPORT



December 31, 2024	
IGI Report Number	LG671480576
Description	LABORATORY GROWN DIAMOND
Shape and Cutting Style	ROUND BRILLIANT
Measurements	10.97 - 11.01 X 6.72 MM
GRADING RESULTS	
Carat Weight	5.04 CARATS
Color Grade	E
Clarity Grade	VS 1
Cut Grade	IDEAL



### ADDITIONAL GRADING INFORMATION

Polish	EXCELLENT
Symmetry	EXCELLENT
Fluorescence	NONE
Inscription(s)	 LG671480576
Comments: This Laboratory Grown Diamond was created by Chemical Vapor Deposition (CVD) growth process.	
Type IIa	



© IGI 2020, International Gemological Institute

FD - 10 20



THIS DOCUMENT WAS PRODUCED WITH THE FOLLOWING SECURITY MEASURES: SPECIAL DOCUMENT PAPER, INK SCREENS, WATERMARK, BACKGROUND DESIGNS, HOLOGRAM AND OTHER SECURITY FEATURES NOT LISTED AND DO EXCEED DOCUMENT SECURITY INDUSTRY GUIDELINES

**www.igi.org**

December 31, 2024

GI Report No LG6:  
POC/IND BRILLIANT

ROUND BRILLIANT  
10.97 - 11.01 X 6.72 MM

10.97 - 11.01 X 6.72 MM

Color Grade

Clarity Grade	VS 1
Out Grade	IDEAL

cut grade	IDEAL
Depth	61.1%

	59%
Table	
Girdle	

Medium to slightly  
Thick (Faceted)

Culet	Pointed	Excellent
Polish		

Polish	EXCELLENT
Symmetry	EXCELLENT

Fluorescence	NONE
Inscription(s)	1881 G-671480576

1521-1522

**Comments:**  
This Laboratory Grown Diamond was  
created by Chemical Vapor Deposition

Created by Chemical Vapor Deposition (CVD) growth process.  
Type IIa

type III