

INTERNATIONAL  
GEMOLOGICAL  
INSTITUTE

ELECTRONIC COPY

LABORATORY GROWN DIAMOND REPORT

December 30, 2024

IGI Report Number

Description

Shape and Cutting Style

Measurements

LG671457710

LABORATORY GROWN DIAMOND

ROUND BRILLIANT

10.50 - 10.56 x 6.42 mm

GRADING RESULTS

Carat Weight

Color Grade

Clarity Grade

Cut Grade

4.36 CARATS

E

VS 1

IDEAL

ADDITIONAL GRADING INFORMATION

Polish

Symmetry

Fluorescence

Inscription(s)

Comments: HEARTS & ARROWS

This Laboratory Grown Diamond was created by Chemical Vapor Deposition (CVD) growth process. Type IIa

EXCELLENT

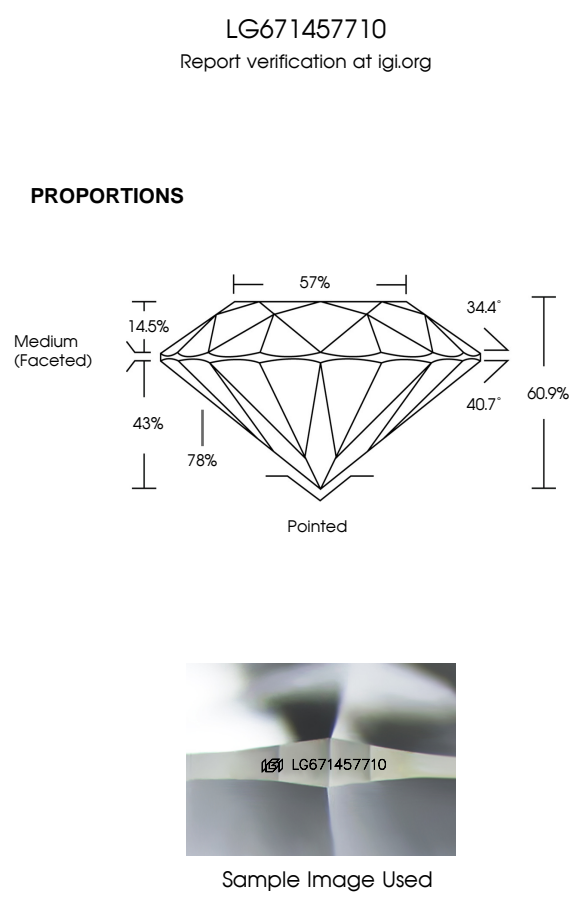
EXCELLENT

NONE

IGI LG671457710

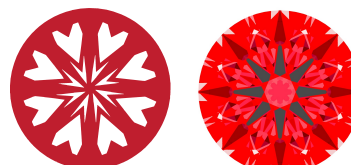
IGI LG671457710

This Laboratory Grown Diamond was created by Chemical Vapor Deposition (CVD) growth process. Type IIa



LIGHT PERFORMANCE REPORT

Light Performance Grade: **Exceptional**



Ideal-Scope representation

LowModerateHighSuperiorExceptional

Light Performance

Brightness

Fire

Contrast



COLOR

D E F G H I J FaintVery LightLight

CLARITY


IF VVS 1 - 2 VS 1 - 2 SI 1 - 2 I 1 - 3

Internally Flawless Very Very Slightly Included Very Slightly Included Slightly Included Included



© IGI 2020, International Gemological Institute

FD - 10 20



December 30, 2024

IGI Report Number

Description

Shape and Cutting Style

Measurements

LG671457710

LABORATORY GROWN DIAMOND

ROUND BRILLIANT

10.50 - 10.56 X 6.42 MM

GRADING RESULTS

Carat Weight

Color Grade

Clarity Grade

Cut Grade

4.36 CARATS

E

VS 1

IDEAL

ADDITIONAL GRADING INFORMATION

Polish

Symmetry

Fluorescence

Inscription(s)

Comments: HEARTS & ARROWS

This Laboratory Grown Diamond was created by Chemical Vapor Deposition (CVD) growth process. Type IIa

EXCELLENT

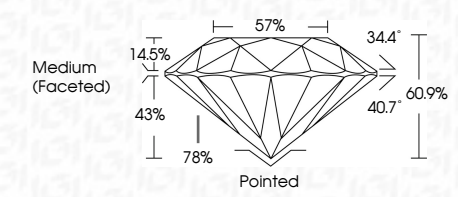
EXCELLENT

NONE

IGI LG671457710


IGI LG671457710

This Laboratory Grown Diamond was created by Chemical Vapor Deposition (CVD) growth process. Type IIa



Medium (Faceted)

Pointed



IGI

December 30, 2024

IGI Report No LG671457710

ROUND BRILLIANT

10.50 - 10.56 X 6.42 MM

Carat Weight

Color Grade

Clarity Grade

Cut Grade

Depth

Table

Girdle

Culet

Polish

Symmetry

Fluorescence

Inscription(s)

Comments: HEARTS & ARROWS

This Laboratory Grown Diamond was created by Chemical Vapor Deposition (CVD) growth process. Type IIa

4.36 CARATS

E

VS 1

IDEAL

60.9%

57%

Medium (Faceted)

Pointed

EXCELLENT

EXCELLENT

NONE

IGI LG671457710

IGI LG671457710

This Laboratory Grown Diamond was created by Chemical Vapor Deposition (CVD) growth process. Type IIa