



ELECTRONIC COPY

LG671447303
Report verification at igi.org



January 9, 2025
IGI Report Number LG671447303
Description LABORATORY GROWN DIAMOND
Shape and Cutting Style CUT CORNERED RECTANGULAR MODIFIED BRILLIANT
Measurements 8.76 X 6.52 X 4.32 MM
GRADING RESULTS
Carat Weight 2.28 CARATS
Color Grade FANCY INTENSE YELLOW
Clarity Grade VS 1

LABORATORY GROWN DIAMOND REPORT

January 9, 2025
IGI Report Number LG671447303
Description LABORATORY GROWN DIAMOND
Shape and Cutting Style CUT CORNERED RECTANGULAR MODIFIED BRILLIANT
Measurements 8.76 X 6.52 X 4.32 MM

GRADING RESULTS

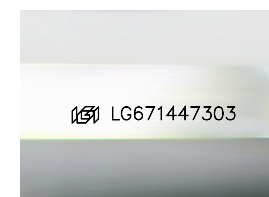
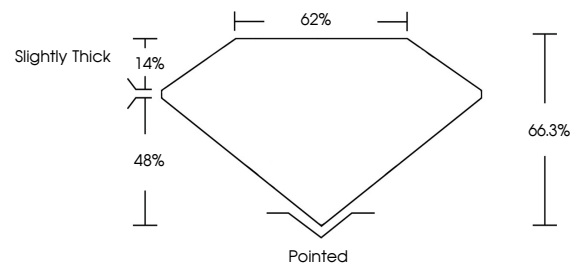
Carat Weight 2.28 CARATS
Color Grade FANCY INTENSE YELLOW
Clarity Grade VS 1

ADDITIONAL GRADING INFORMATION

Polish EXCELLENT
Symmetry VERY GOOD
Fluorescence NONE
Inscription(s) LG671447303

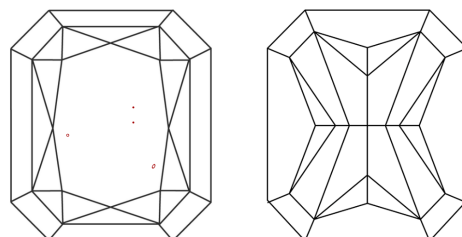
Comments: This Laboratory Grown Diamond was created by Chemical Vapor Deposition (CVD) growth process.

PROPORTIONS



Sample Image Used

CLARITY CHARACTERISTICS



KEY TO SYMBOLS

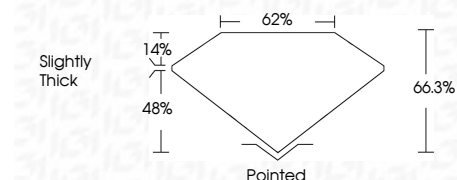
Red symbols indicate internal characteristics.
Green symbols indicate external characteristics.

COLOR

D E F G H I J Faint Very Light Light

CLARITY

IF WS 1-2 VS 1-2 SI 1-2 I 1-3
Internally Flawless Very Very Slightly Included Very Slightly Included Slightly Included Included



ADDITIONAL GRADING INFORMATION

Polish EXCELLENT
Symmetry VERY GOOD
Fluorescence NONE
Inscription(s) LG671447303
Comments: This Laboratory Grown Diamond was created by Chemical Vapor Deposition (CVD) growth process.



January 9, 2025
IGI Report No LG671447303
CUT CORNERED RECT. MODIFIED BRILLIANT
8.76 X 6.52 X 4.32 MM
2.28 CARATS
FANCY INTENSE YELLOW
VS 1
66.3%
62%
Slightly Thick
Pointed
EXCELLENT
VERY GOOD
NONE
LG671447303
Comments: This Laboratory Grown Diamond was created by Chemical Vapor Deposition (CVD) growth process.

Certified SUSTAINABILITY RATED DIAMOND
SCS GLOBAL SERVICES
All certified diamonds come with an individual certificate, ONLY available at an accredited retailer
FOR THE SUSTAINABILITY RATED CERTIFICATE, SCAN HERE