



ELECTRONIC COPY

LABORATORY GROWN DIAMOND REPORT

January 10, 2025	
IGI Report Number	LG671443330
Description	LABORATORY GROWN DIAMOND
Shape and Cutting Style	PRINCESS CUT
Measurements	5.60 X 5.48 X 4.18 MM

GRADING RESULTS

Carat Weight	1.14 CARAT
Color Grade	FANCY VIVID PINK
Clarity Grade	VS 1

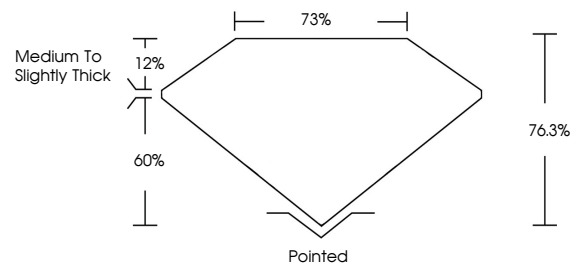
ADDITIONAL GRADING INFORMATION

Polish	VERY GOOD
Symmetry	VERY GOOD
Fluorescence	SLIGHT
Inscription(s)	 LG671443330

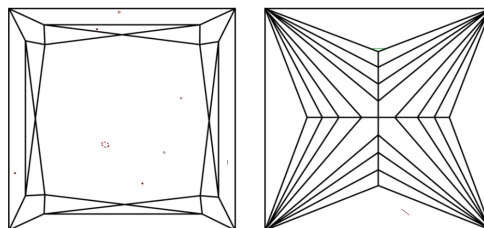
Comments: This Laboratory Grown Diamond was created by Chemical Vapor Deposition (CVD) growth process.
Indications of post-growth treatment.

LG671443330
Report verification at igi.org

PROPORTIONS

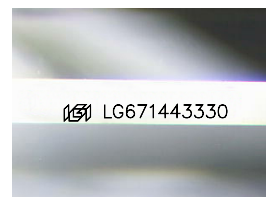


CLARITY CHARACTERISTICS



KEY TO SYMBOLS

Red symbols indicate internal characteristics.
Green symbols indicate external characteristics.



Sample Image Used

COLOR

D E F G H I J Faint Very Light Light

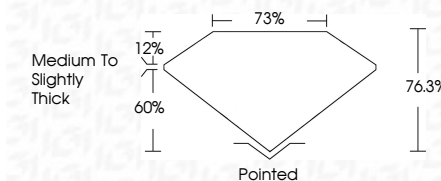
CLARITY

IF	VS ¹⁻²	VS ¹⁻²	SI ¹⁻²	I ¹⁻³
Internally Flawless	Very Very Slightly Included	Very Slightly Included	Slightly Included	Included

LABORATORY GROWN DIAMOND REPORT



January 10, 2025	
IGI Report Number	LG671443330
Description	LABORATORY GROWN DIAMOND
Shape and Cutting Style	PRINCESS CUT
Measurements	5.60 X 5.48 X 4.18 MM
GRADING RESULTS	
Carat Weight	1.14 CARAT
Color Grade	FANCY VIVID PINK
Clarity Grade	VS 1



ADDITIONAL GRADING INFORMATION

Polish	VERY GOOD
Symmetry	VERY GOOD
Fluorescence	SLIGHT
Inscription(s)	 LG671443330
<p>Comments: This Laboratory Grown Diamond was created by Chemical Vapor Deposition (CVD) growth process.</p> <p>Indications of post-growth treatment.</p>	



© IGI 2020, International Gemological Institute

FD - 10 20



THIS DOCUMENT WAS PRODUCED WITH THE FOLLOWING SECURITY MEASURES: SPECIAL DOCUMENT PAPER, INK SCREENS, WATERMARK, BACKGROUND DESIGNS, HOLOGRAM AND OTHER SECURITY FEATURES NOT LISTED AND DO EXCEED DOCUMENT SECURITY INDUSTRY GUIDELINE

www.igi.org

January 10, 2025
 LGI Report No LG671443330
 PRINCESS CIT

1.14 CARAT	
FANCY VIVID PINK	
VS 1	
76.3%	73%
Medium To Slightly Thick	
Pointed	
VERY GOOD	
VERY GOOD	
SLIGHT	

Comments:
This Laboratory Grown Diamond was
created by Chemical Vapor Deposition
(CVD) growth process.