

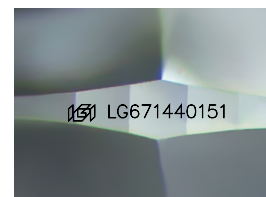
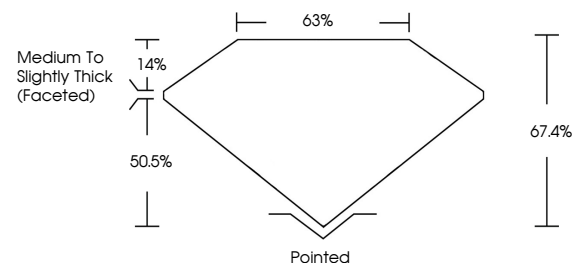


ELECTRONIC COPY

LABORATORY GROWN DIAMOND REPORT

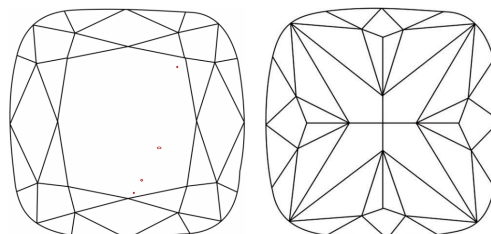
LG671440151
Report verification at igi.org

PROPORTIONS



Sample Image Used

CLARITY CHARACTERISTICS



KEY TO SYMBOLS

Red symbols indicate internal characteristics.
Green symbols indicate external characteristics.

COLOR

D E F G H I J Faint Very Light Light

CLARITY

IF VWS¹⁻² VS¹⁻² SI¹⁻² I¹⁻³

Internally Flawless	Very Very Slightly Included	Very Slightly Included	Slightly Included	Included
------------------------	--------------------------------	---------------------------	----------------------	----------

LABORATORY GROWN DIAMOND REPORT



December 30, 2024

IGI Report Number **LG671440151**Description **LABORATORY GROWN DIAMOND**Shape and Cutting Style **SQUARE CUSHION BRILLIANT**

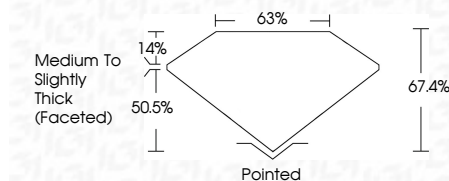
Measurements **8.46 X 8.32 X 5.61 MM**

GRADING RESULTS

Carat Weight 3.08 CARATS

Color Grade

Clarity Grade VS 1



ADDITIONAL GRADING INFORMATION

Polish **EXCELLENT**Symmetry **EXCELLENT**Fluorescence **NONE**Inscription(s)  LG671440151

Comments: This Laboratory Grown Diamond was created by Chemical Vapor Deposition (CVD) growth process.
Type IIa



© IGI 2020, International Gemological Institute

FD - 10 20

www.igi.org

THIS DOCUMENT WAS PRODUCED WITH THE FOLLOWING SECURITY MEASURES: SPECIAL DOCUMENT PAPER, INK SCREENS, WATERMARK, BACKGROUND DESIGNS, HOLOGRAM AND OTHER SECURITY FEATURES NOT LISTED AND DO EXCEED DOCUMENT SECURITY INDUSTRY GUIDELINES

December 30, 2024	3.08 CARATS
GI Report No. LG27140151	VS 1
SQUARE CLUSHION BRILLIANT	67.4%
14.46 X 8.32 X 5.61 MM	65%
	Medium to Slightly Thick (Faceted)
	Pointed
	EXCELLENT
	EXCELLENT
	NONE
	1691 LG27140151

Comments:

The Laboratory Grown Diamond was produced using the Chemical Vapor Deposition (CVD) growth process.

Type IIG