



ELECTRONIC COPY

LG671433283 Report verification at igi.org



January 2, 2025 IGI Report Number LG671433283 Description LABORATORY GROWN DIAMOND Shape and Cutting Style ROUND BRILLIANT Measurements 6.50 - 6.54 X 3.92 MM GRADING RESULTS Carat Weight 1.03 CARAT Color Grade FANCY YELLOW Clarity Grade VVS 2 Cut Grade IDEAL

LABORATORY GROWN DIAMOND REPORT

January 2, 2025 IGI Report Number LG671433283 Description LABORATORY GROWN DIAMOND Shape and Cutting Style ROUND BRILLIANT Measurements 6.50 - 6.54 X 3.92 MM

GRADING RESULTS

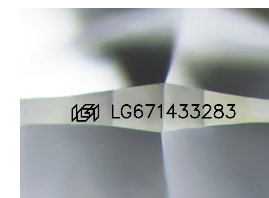
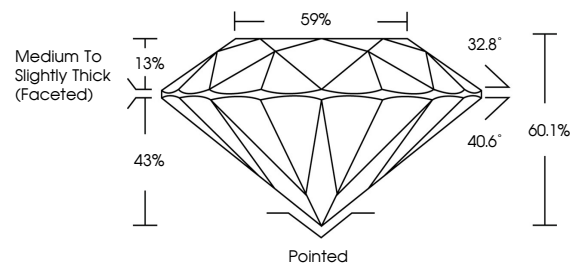
Carat Weight 1.03 CARAT Color Grade FANCY YELLOW Clarity Grade VVS 2 Cut Grade IDEAL

ADDITIONAL GRADING INFORMATION

Polish EXCELLENT Symmetry EXCELLENT Fluorescence NONE Inscription(s) IGI LG671433283

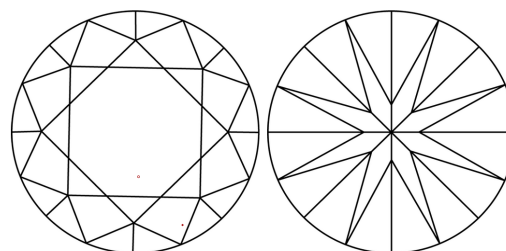
Comments: This Laboratory Grown Diamond was created by Chemical Vapor Deposition (CVD) growth process.

PROPORTIONS



Sample Image Used

CLARITY CHARACTERISTICS



KEY TO SYMBOLS

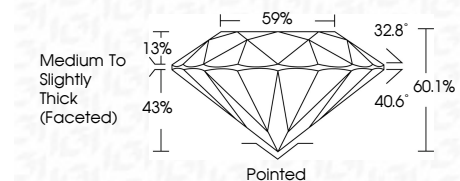
Red symbols indicate internal characteristics. Green symbols indicate external characteristics.

COLOR

D E F G H I J Faint Very Light Light

CLARITY

IF VVS 1-2 VS 1-2 SI 1-2 I 1-3 Internally Flawless Very Very Slightly Included Very Slightly Included Slightly Included Included



ADDITIONAL GRADING INFORMATION

Polish EXCELLENT Symmetry EXCELLENT Fluorescence NONE Inscription(s) IGI LG671433283 Comments: This Laboratory Grown Diamond was created by Chemical Vapor Deposition (CVD) growth process.



January 2, 2025 IGI Report No LG671433283 ROUND BRILLIANT 6.50 - 6.54 X 3.92 MM 1.03 CARAT FANCY YELLOW VVS 2 IDEAL 60.1% 59% Medium To Slightly Thick (Faceted) Pointed EXCELLENT EXCELLENT NONE NONE IGI LG671433283 Comments: This Laboratory Grown Diamond was created by Chemical Vapor Deposition (CVD) growth process.

Certified SUSTAINABILITY RATED DIAMOND SCS GLOBAL SERVICES All certified diamonds come with an individual certificate, ONLY available at an accredited retailer. Includes QR code and 'FOR THE SUSTAINABILITY RATED CERTIFICATE, SCAN HERE' text.