



ELECTRONIC COPY

LABORATORY GROWN DIAMOND REPORT

December 28, 2024	
IGI Report Number	LG671428647
Description	LABORATORY GROWN DIAMOND
Shape and Cutting Style	CUT CORNERED RECTANGULAR MODIFIED BRILLIANT
Measurements	13.08 X 9.03 X 6.07 MM

GRADING RESULTS

Carat Weight	6.09 CARATS
Color Grade	I
Clarity Grade	VVS 2

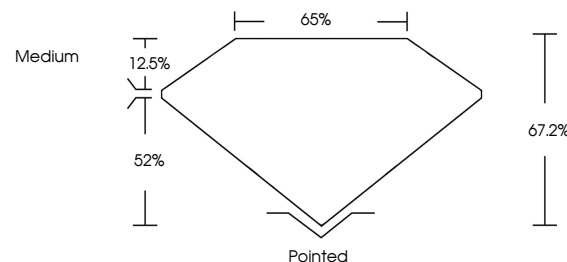
ADDITIONAL GRADING INFORMATION

Polish	EXCELLENT
Symmetry	EXCELLENT
Fluorescence	NONE
Inscription(s)	15 LG671428647

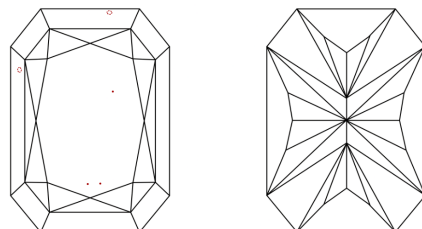
Comments: This Laboratory Grown Diamond was created by Chemical Vapor Deposition (CVD) growth process.
Type IIa

LG671428647
Report verification at lgi.org

PROPORTIONS

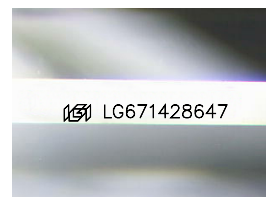


CLARITY CHARACTERISTICS



KEY TO SYMBOLS

Red symbols indicate internal characteristics.
Green symbols indicate external characteristics.



Sample Image Used

COLOR

D E F G H I J Faint Very Light Light

CLARITY

IF VWS¹⁻² VS¹⁻² SI¹⁻² I¹⁻³

Internally Flawless	Very Very Slightly Included	Very Slightly Included	Slightly Included	Included
------------------------	--------------------------------	---------------------------	----------------------	----------

LABORATORY GROWN DIAMOND REPORT

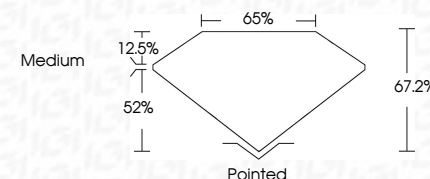


December 28, 2024	
IGI Report Number	LG671428647
Description	LABORATORY GROWN DIAMOND
Shape and Cutting Style	CUT CORNERED RECTANGULAR MODIFIED BRILLIANT

Measurements 13.08 X 9.03 X 6.07 MM

GRADING RESULTS

Carat Weight	6.09 CARATS
Color Grade	I
Clarity Grade	VVS 2



ADDITIONAL GRADING INFORMATION

Polish	EXCELLENT
Symmetry	EXCELLENT
Fluorescence	NONE
Inscription(s)	15 LG 671428647

Comments: This Laboratory Grown Diamond was created by Chemical Vapor Deposition (CVD) growth process.
Type IIa



© IGI 2020, International Gemological Institute

FD - 10 20

www.igi.org

THIS DOCUMENT WAS PRODUCED WITH THE FOLLOWING SECURITY MEASURES: SPECIAL DOCUMENT PAPER, INK SCREENS, WATERMARK, BACKGROUND DESIGNS, HOLOGRAM AND OTHER SECURITY FEATURES NOT LISTED AND DO EXCEED DOCUMENT SECURITY INDUSTRY GUIDELINES

	December 28, 2024
	GJ CORNERED RECT. MODIFIED BRILLIANT
	ID#1 G571429647
	Carat Weight Color Grade Clarity Grade Depth % Table % Symmetry Fluorescence Inscription(s)
	13.08 x 9.03 X 6.07 MM
	6.09 CARATS I VVS 2 67.2% 65% Medium Excellent EXCELLENT NONE #GJ1 G571429647
Comments:	The Laboratory Grown Diamond was grown by Vapor Deposition (CVD) growth process. Type IIa