

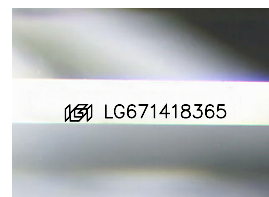
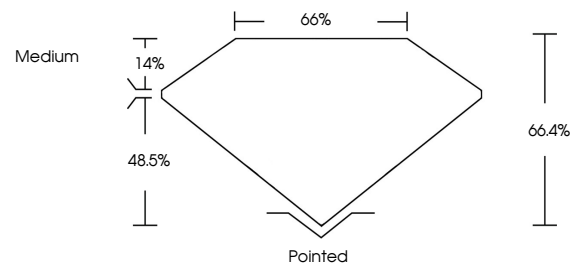


**ELECTRONIC COPY**

## LABORATORY GROWN DIAMOND REPORT

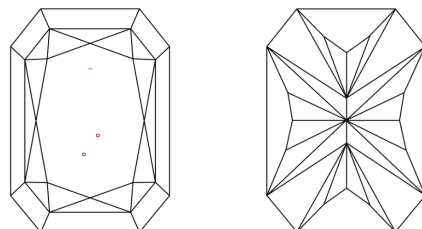
LG671418365  
Report verification at [lgi.org](https://lgi.org)

## PROPORTIONS



Sample Image Used

## CLARITY CHARACTERISTICS



## KEY TO SYMBOLS

Red symbols indicate internal characteristics.  
Green symbols indicate external characteristics.

## COLOR

D E F G H I J Faint Very Light Light

## CLARITY

IF      WS<sup>1-2</sup>      VS<sup>1-2</sup>      SI<sup>1-2</sup>      I<sup>1-3</sup>

Internally Flawless	Very Very Slightly Included	Very Slightly Included	Slightly Included	Included
------------------------	--------------------------------	---------------------------	----------------------	----------

## LABORATORY GROWN DIAMOND REPORT



December 25, 2024

IGI Report Number **LG671418365**Description **LABORATORY GROWN DIAMOND**

Shape and Cutting Style

CUT CORNERED  
RECTANGULAR MODIFIED  
BRILLIANT

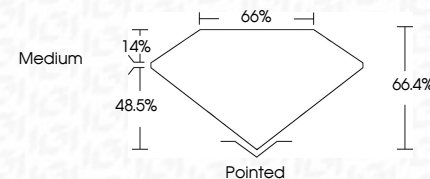
Measurements **9.01 X 6.39 X 4.24 MM**

## GRADING RESULTS

Carat Weight **2.10 CARATS**

Color Grade	F
-------------	---

Clarity Grade VS 1



### ADDITIONAL GRADING INFORMATION

Polish **EXCELLENT**Symmetry **EXCELLENT**Fluorescence **NONE**Inscription(s)  LG671418365

Comments: This Laboratory Grown Diamond was created by Chemical Vapor Deposition (CVD) growth process.  
Type IIa



IG



© IGI 2020, International Gemological Institute

FD - 10 20

**www.igi.org**

THIS DOCUMENT WAS PRODUCED WITH THE FOLLOWING SECURITY MEASURES: SPECIAL DOCUMENT PAPER, INK SCREENS, WATERMARK, BACKGROUND DESIGNS, HOLOGRAM AND OTHER SECURITY FEATURES NOT LISTED AND DO EXCEED DOCUMENT SECURITY INDUSTRY GUIDELINES

December 25, 2024	2.10 CARATS	Vs 1	Polished
GI Report No LG571418365		66.4%	EXCELLENT
CUT CORNERED RECT. MODIFIED BRILLIANT		66%	EXCELLENT
		Medium	NONE
			1681 LG571418365

Comments:  
 The Laboratory Grown Diamond was  
 created by Chemical Vapor Deposition  
 (CVD) growth process.  
 Type IIa