



INTERNATIONAL GEMOLOGICAL INSTITUTE

ELECTRONIC COPY

LG671415190

LABORATORY GROWN DIAMOND REPORT

December 27, 2024

IGI Report Number

LG671415190

Description

LABORATORY GROWN DIAMOND

Shape and Cutting Style

CUSHION MODIFIED BRILLIANT

Measurements

5.95 X 5.02 X 3.20 MM

GRADING RESULTS

Carat Weight

0.73 CARAT

Color Grade

D

Clarity Grade

VVS 2

ADDITIONAL GRADING INFORMATION

Polish

EXCELLENT

Symmetry

VERY GOOD

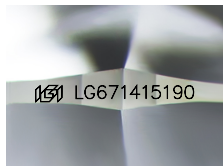
Fluorescence

NONE

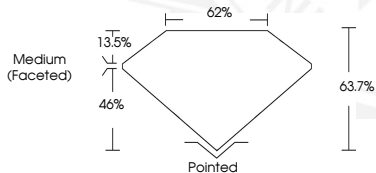
Inscription(s)

IGI LG671415190

Comments: This Laboratory Grown Diamond was created by Chemical Vapor Deposition (CVD) growth process. Type IIa



Sample Image Used



December 27, 2024

IGI Report Number LG671415190

CUSHION MODIFIED BRILLIANT

LABORATORY GROWN DIAMOND

5.95 X 5.02 X 3.20 MM

Carat Weight 0.73 CARAT

Color Grade D

Clarity Grade VVS 2

Polish EXCELLENT

Symmetry VERY GOOD

Fluorescence NONE

Inscription(s) IGI LG671415190

Comments: This Laboratory Grown Diamond was created by Chemical Vapor Deposition (CVD) growth process. Type IIa



December 27, 2024

IGI Report Number LG671415190

CUSHION MODIFIED BRILLIANT

LABORATORY GROWN DIAMOND

5.95 X 5.02 X 3.20 MM

Carat Weight 0.73 CARAT

Color Grade D

Clarity Grade VVS 2

Polish EXCELLENT

Symmetry VERY GOOD

Fluorescence NONE

Inscription(s) IGI LG671415190

Comments: This Laboratory Grown Diamond was created by Chemical Vapor Deposition (CVD) growth process. Type IIa



THIS DOCUMENT WAS PRODUCED WITH THE FOLLOWING SECURITY MEASURES: SPECIAL DOCUMENT PAPER, INK SCREENS, WATERMARK, BACKGROUND DESIGNS, HOLOGRAM AND OTHER SECURITY FEATURES NOT LISTED AND DO EXCEED DOCUMENT SECURITY INDUSTRY GUIDELINES.

For terms & conditions and to verify this report, please visit www.igi.org