



INTERNATIONAL GEMOLOGICAL INSTITUTE

ELECTRONIC COPY

LG671411541



December 26, 2024

IGI Report Number LG671411541
CUSHION MODIFIED BRILLIANT
LABORATORY GROWN DIAMOND
5.40 X 4.33 X 2.89 MM

Carat Weight 0.54 CARAT
Color Grade D
Clarity Grade VVS 1
Polish EXCELLENT
Symmetry VERY GOOD
Fluorescence NONE
Inscription(s) LG671411541

Comments: This Laboratory Grown Diamond was created by Chemical Vapor Deposition (CVD) growth process. Type IIa

LABORATORY GROWN DIAMOND REPORT

December 26, 2024

IGI Report Number

LG671411541

Description

LABORATORY GROWN DIAMOND

Shape and Cutting Style

CUSHION MODIFIED BRILLIANT

Measurements

5.40 X 4.33 X 2.89 MM

GRADING RESULTS

Carat Weight

0.54 CARAT

Color Grade

D

Clarity Grade

VVS 1

ADDITIONAL GRADING INFORMATION

Polish

EXCELLENT

Symmetry

VERY GOOD

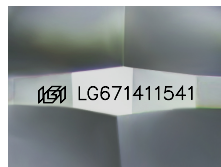
Fluorescence

NONE

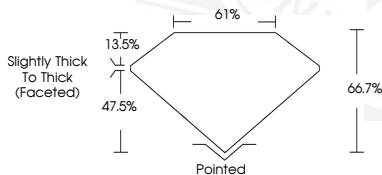
Inscription(s)

LG671411541

Comments: This Laboratory Grown Diamond was created by Chemical Vapor Deposition (CVD) growth process. Type IIa



Sample Image Used



December 26, 2024

IGI Report Number LG671411541
CUSHION MODIFIED BRILLIANT
LABORATORY GROWN DIAMOND
5.40 X 4.33 X 2.89 MM

Carat Weight 0.54 CARAT
Color Grade D
Clarity Grade VVS 1
Polish EXCELLENT
Symmetry VERY GOOD
Fluorescence NONE
Inscription(s) LG671411541

Comments: This Laboratory Grown Diamond was created by Chemical Vapor Deposition (CVD) growth process. Type IIa



THIS DOCUMENT WAS PRODUCED WITH THE FOLLOWING SECURITY MEASURES: SPECIAL DOCUMENT PAPER, INK SCREENS, WATERMARK, BACKGROUND DESIGNS, HOLOGRAM AND OTHER SECURITY FEATURES NOT LISTED AND DO EXCEED DOCUMENT SECURITY INDUSTRY GUIDELINES.

For terms & conditions and to verify this report, please visit www.igi.org