



ELECTRONIC COPY

LABORATORY GROWN DIAMOND REPORT

LG671407518

Report verification at igi.org

LABORATORY GROWN DIAMOND REPORT

LABORATORY GROWN DIAMOND REPORT

LABORATORY GROWN DIAMOND REPORT

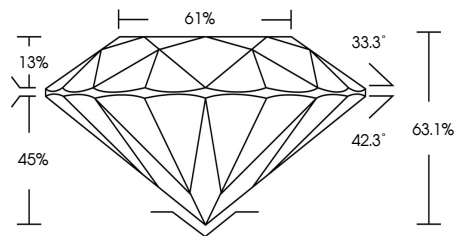
January 17, 2025
IGI Report Number LG671407518
Description LABORATORY GROWN DIAMOND
Shape and Cutting Style ROUND BRILLIANT
Measurements 4.47 - 4.51 X 2.83 MM
GRADING RESULTS
Carat Weight 0.35 CARAT
Color Grade FANCY BLACK

ADDITIONAL GRADING INFORMATION

Fluorescence NONE
Inscription(s) IGI LG671407518

Comments: This Laboratory Grown Diamond was created by Chemical Vapor Deposition (CVD) growth process.
Indications of post-growth treatment.

PROPORTIONS



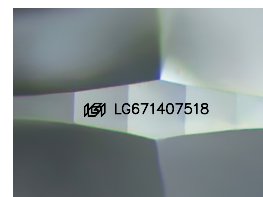
GRADING SCALES

CLARITY

Table with 5 columns: IF, VVS 1-2, VS 1-2, SI 1-2, I 1-3. Rows: Internally Flawless, Very Very Slightly Included, Very Slightly Included, Slightly Included, Included.

COLOR

Table with 5 columns: D, E, F, G, H, I, J, Faint, Very Light, Light. Row: Light Tint, Fancy Light, Fancy, Fancy Intense, Fancy Vivid.



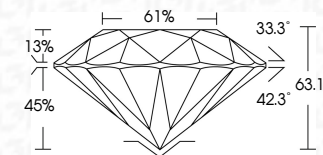
Sample Image Used

January 17, 2025
IGI Report Number LG671407518
Description LABORATORY GROWN DIAMOND
Shape and Cutting Style ROUND BRILLIANT
Measurements 4.47 - 4.51 X 2.83 MM
GRADING RESULTS
Carat Weight 0.35 CARAT
Color Grade FANCY BLACK

ADDITIONAL GRADING INFORMATION

Fluorescence NONE
Inscription(s) IGI LG671407518

Comments: This Laboratory Grown Diamond was created by Chemical Vapor Deposition (CVD) growth process.
Indications of post-growth treatment.



IGI

January 17, 2025
IGI Report No LG671407518
ROUND BRILLIANT
4.47 - 4.51 X 2.83 MM
0.35 CARAT
FANCY BLACK
Color Grade
Depth 63.1%
Table 61%
Grades
NONE
Fluorescence
Inscriptions(s) IGI LG671407518
Comments: This Laboratory Grown Diamond was created by Chemical Vapor Deposition (CVD) growth process.
Indications of post-growth treatment.