



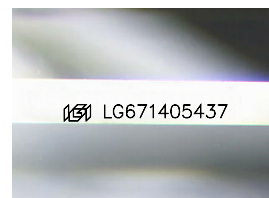
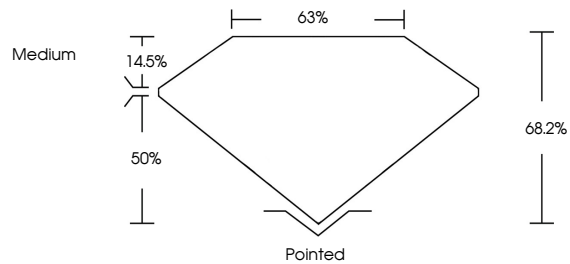
**INTERNATIONAL  
GEMOLOGICAL  
INSTITUTE**

**ELECTRONIC COPY**

## LABORATORY GROWN DIAMOND REPORT

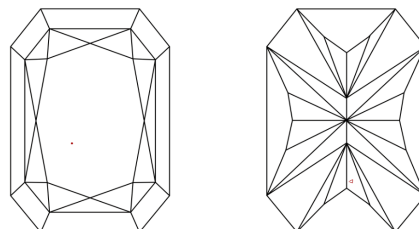
LG671405437  
Report verification at [igi.org](https://igi.org)

## PROPORTIONS



Sample Image Used

## CLARITY CHARACTERISTICS



## KEY TO SYMBOLS

Red symbols indicate internal characteristics.  
Green symbols indicate external characteristics.

**COLOR**

D E F G H I J Faint Very Light Light

## CLARITY

IF      WS<sup>1-2</sup>      VS<sup>1-2</sup>      SI<sup>1-2</sup>      I<sup>1-3</sup>

Internally Flawless	Very Very Slightly Included	Very Slightly Included	Slightly Included	Included
------------------------	--------------------------------	---------------------------	----------------------	----------



© IGI 2020, International Gemological Institute

FD - 10 20

**www.igi.org**

THIS DOCUMENT WAS PRODUCED WITH THE FOLLOWING SECURITY MEASURES: SPECIAL DOCUMENT PAPER, INK SCREENS, WATERMARK, BACKGROUND DESIGNS, HOLOGRAM AND OTHER SECURITY FEATURES NOT LISTED AND DO EXCEED DOCUMENT SECURITY INDUSTRY GUIDELINES

## LABORATORY GROWN DIAMOND REPORT



December 28, 2024

IGI Report Number **LG671405437**

Description	LABORATORY GROWN DIAMOND
-------------	--------------------------

Shape and Cutting Style

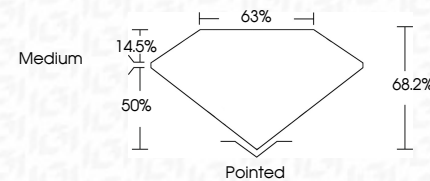
Measurements **11.94 X 8.49 X 5.79 MM**

## GRADING RESULTS

Carat Weight **5.10 CARATS**

Color Grade	E
-------------	---

Clarity Grade VS 1



### ADDITIONAL GRADING INFORMATION

Polish **EXCELLENT**Symmetry **EXCELLENT**Fluorescence **NONE**Inscription(s) 131 LG671405437

Comments: This Laboratory Grown Diamond was created by Chemical Vapor Deposition (CVD) growth process.  
Type IIa



IG

December 28, 2024	1691 LG571406457
IGI REPORT NO	1691 LG571406457
CUT CORNERED RECT.	MODIFIED BRILLIANT
Weight	1.19 CARATS
Color	VS 1
Clarity	68.2%
Depth	63%
Table	Medium
Girdle	
Culet	Pointed
Polish	EXCELLENT
Symmetry	EXCELLENT
Fluorescence	NONE
Inscriptions	1691 LG571406457
Comments:	
This Laboratory Grown Diamond was created by Chemical Vapor Deposition (CVD) growth process.	
Type IIA	