



ELECTRONIC COPY

LG670487544 Report verification at igi.org



December 27, 2024
IGI Report Number LG670487544
Description LABORATORY GROWN DIAMOND
Shape and Cutting Style ROUND BRILLIANT
Measurements 13.59 - 13.65 X 7.98 MM
GRADING RESULTS
Carat Weight 9.02 CARATS
Color Grade G
Clarity Grade SI 1
Cut Grade EXCELLENT

LABORATORY GROWN DIAMOND REPORT

December 27, 2024
IGI Report Number LG670487544
Description LABORATORY GROWN DIAMOND
Shape and Cutting Style ROUND BRILLIANT
Measurements 13.59 - 13.65 X 7.98 MM

GRADING RESULTS

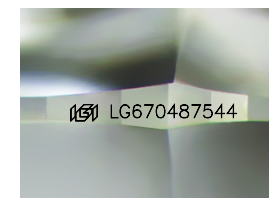
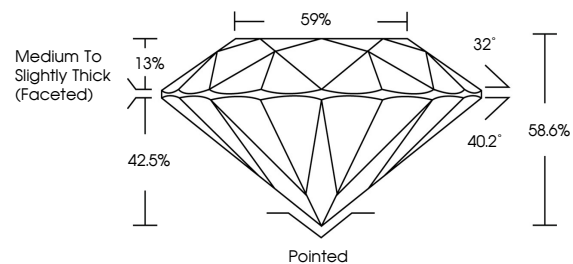
Carat Weight 9.02 CARATS
Color Grade G
Clarity Grade SI 1
Cut Grade EXCELLENT

ADDITIONAL GRADING INFORMATION

Polish EXCELLENT
Symmetry EXCELLENT
Fluorescence NONE
Inscription(s) IGI LG670487544

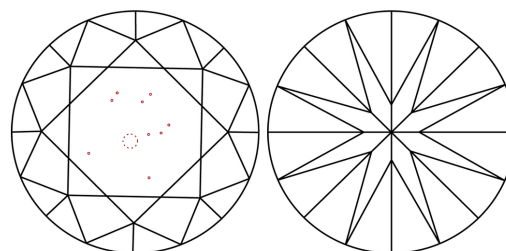
Comments: This Laboratory Grown Diamond was created by Chemical Vapor Deposition (CVD) growth process. Type IIa

PROPORTIONS



Sample Image Used

CLARITY CHARACTERISTICS



KEY TO SYMBOLS

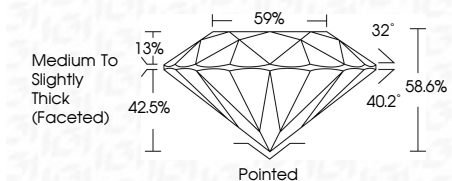
Red symbols indicate internal characteristics.
Green symbols indicate external characteristics.

COLOR

D E F G H I J Faint Very Light Light

CLARITY

IF VS 1-2 VS 1-2 SI 1-2 I 1-3
Internally Flawless Very Very Slightly Included Very Slightly Included Slightly Included Included



ADDITIONAL GRADING INFORMATION

Polish EXCELLENT
Symmetry EXCELLENT
Fluorescence NONE
Inscription(s) IGI LG670487544
Comments: This Laboratory Grown Diamond was created by Chemical Vapor Deposition (CVD) growth process. Type IIa



IGI



December 27, 2024
IGI Report No LG670487544
ROUND BRILLIANT
13.59 - 13.65 X 7.98 MM
9.02 CARATS
Color Grade G
Clarity Grade SI 1
Depth 58.6%
Table 59%
Girdle Medium To Slightly Thick (Faceted)
Culet Pointed
Polish EXCELLENT
Symmetry EXCELLENT
Fluorescence NONE
Inscription(s) IGI LG670487544
Comments: This Laboratory Grown Diamond was created by Chemical Vapor Deposition (CVD) growth process. Type IIa