



LG670481377

LABORATORY GROWN DIAMOND REPORT

December 26, 2024
 IGI Report Number **LG670481377**
 Description **LABORATORY GROWN DIAMOND**
 Shape and Cutting Style **EMERALD CUT**
 Measurements **6.07 X 4.60 X 2.88 MM**

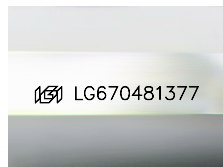
GRADING RESULTS

Carat Weight **0.80 CARAT**
 Color Grade **FANCY INTENSE YELLOW**
 Clarity Grade **SI 2**

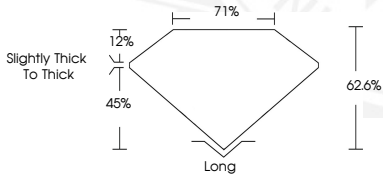
ADDITIONAL GRADING INFORMATION

Polish **GOOD**
 Symmetry **VERY GOOD**
 Fluorescence **NONE**
 Inscription(s) **IGI LG670481377**

Comments: This Laboratory Grown Diamond was created by Chemical Vapor Deposition (CVD) growth process.



Sample Image Used



December 26, 2024
 IGI Report Number **LG670481377**
EMERALD CUT
LABORATORY GROWN DIAMOND
6.07 X 4.60 X 2.88 MM
 Carat Weight **0.80 CARAT**
 Color Grade **FANCY INTENSE YELLOW**
 Clarity Grade **SI 2**
 Polish **GOOD**
 Symmetry **VERY GOOD**
 Fluorescence **NONE**
 Inscription(s) **IGI LG670481377**
 Comments: This Laboratory Grown Diamond was created by Chemical Vapor Deposition (CVD) growth process.



December 26, 2024
 IGI Report Number **LG670481377**
EMERALD CUT
LABORATORY GROWN DIAMOND
6.07 X 4.60 X 2.88 MM
 Carat Weight **0.80 CARAT**
 Color Grade **FANCY INTENSE YELLOW**
 Clarity Grade **SI 2**
 Polish **GOOD**
 Symmetry **VERY GOOD**
 Fluorescence **NONE**
 Inscription(s) **IGI LG670481377**
 Comments: This Laboratory Grown Diamond was created by Chemical Vapor Deposition (CVD) growth process.

THIS DOCUMENT WAS PRODUCED WITH THE FOLLOWING SECURITY MEASURES: SPECIAL DOCUMENT PAPER, INK SCREENS, WATERMARK, BACKGROUND DESIGN, HOLOGRAM AND OTHER SECURITY FEATURES NOT LISTED AND DO EXCEED DOCUMENT SECURITY INDUSTRY GUIDELINES.