



**INTERNATIONAL
GEMOLOGICAL
INSTITUTE**

ELECTRONIC COPY

LG670481376

LABORATORY GROWN DIAMOND REPORT

December 26, 2024
 IGI Report Number **LG670481376**
 Description **LABORATORY GROWN DIAMOND**
 Shape and Cutting Style **EMERALD CUT**
 Measurements **6.07 X 4.61 X 3.03 MM**

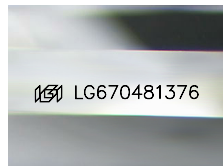
GRADING RESULTS

Carat Weight **0.85 CARAT**
 Color Grade **FANCY YELLOW**
 Clarity Grade **SI 2**

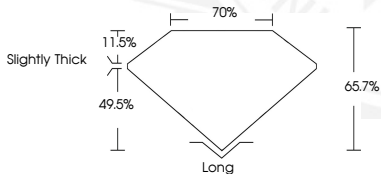
ADDITIONAL GRADING INFORMATION

Polish **EXCELLENT**
 Symmetry **EXCELLENT**
 Fluorescence **NONE**
 Inscription(s) **IGI LG670481376**

Comments: This Laboratory Grown Diamond was created by Chemical Vapor Deposition (CVD) growth process.



Sample Image Used



December 26, 2024
 IGI Report Number **LG670481376**
EMERALD CUT
LABORATORY GROWN DIAMOND
6.07 X 4.61 X 3.03 MM
 Carat Weight **0.85 CARAT**
 Color Grade **FANCY YELLOW**
 Clarity Grade **SI 2**
 Polish **EXCELLENT**
 Symmetry **EXCELLENT**
 Fluorescence **NONE**
 Inscription(s) **IGI LG670481376**

Comments: This Laboratory Grown Diamond was created by Chemical Vapor Deposition (CVD) growth process.



December 26, 2024
 IGI Report Number **LG670481376**
EMERALD CUT
LABORATORY GROWN DIAMOND
6.07 X 4.61 X 3.03 MM
 Carat Weight **0.85 CARAT**
 Color Grade **FANCY YELLOW**
 Clarity Grade **SI 2**
 Polish **EXCELLENT**
 Symmetry **EXCELLENT**
 Fluorescence **NONE**
 Inscription(s) **IGI LG670481376**

Comments: This Laboratory Grown Diamond was created by Chemical Vapor Deposition (CVD) growth process.

THIS DOCUMENT WAS PRODUCED WITH THE FOLLOWING SECURITY MEASURES: SPECIAL DOCUMENT PAPER, PINK SCREENS, WATERMARK, BACKGROUND DESIGN, HOLOGRAM AND OTHER SECURITY FEATURES NOT LISTED AND DO EXCEED DOCUMENT SECURITY INDUSTRY GUIDELINES.

For terms & conditions and to verify this report, please visit www.igi.org