



ELECTRONIC COPY

LG670475561 Report verification at igi.org



January 20, 2025 IGI Report Number LG670475561 Description LABORATORY GROWN DIAMOND Shape and Cutting Style ROUND BRILLIANT Measurements 14.25 - 14.34 X 8.40 MM GRADING RESULTS Carat Weight 10.60 CARATS Color Grade E Clarity Grade VS 1 Cut Grade EXCELLENT

January 20, 2025 IGI Report Number LG670475561 Description LABORATORY GROWN DIAMOND Shape and Cutting Style ROUND BRILLIANT Measurements 14.25 - 14.34 X 8.40 MM

GRADING RESULTS

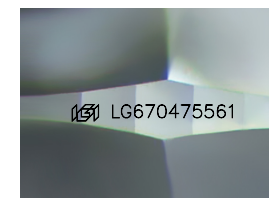
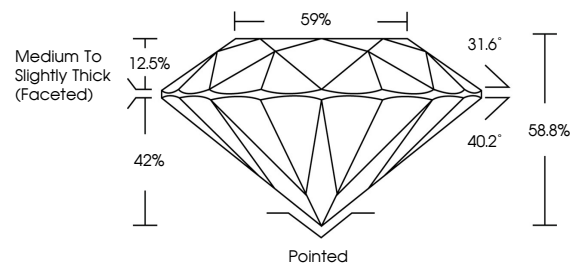
Carat Weight 10.60 CARATS Color Grade E Clarity Grade VS 1 Cut Grade EXCELLENT

ADDITIONAL GRADING INFORMATION

Polish EXCELLENT Symmetry EXCELLENT Fluorescence NONE Inscription(s) IGI LG670475561

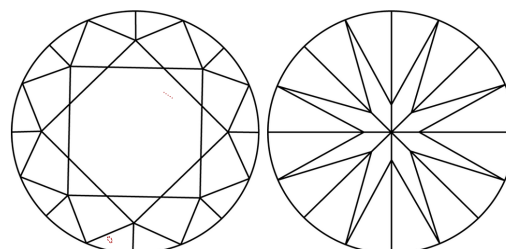
Comments: This Laboratory Grown Diamond was created by Chemical Vapor Deposition (CVD) growth process. Type IIa

PROPORTIONS



Sample Image Used

CLARITY CHARACTERISTICS



KEY TO SYMBOLS

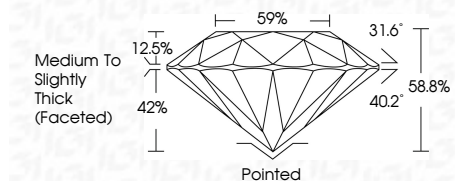
Red symbols indicate internal characteristics. Green symbols indicate external characteristics.

COLOR

D E F G H I J Faint Very Light Light

CLARITY

IF WS 1-2 VS 1-2 SI 1-2 I 1-3 Internally Flawless Very Very Slightly Included Very Slightly Included Slightly Included Included



ADDITIONAL GRADING INFORMATION

Polish EXCELLENT Symmetry EXCELLENT Fluorescence NONE Inscription(s) IGI LG670475561 Comments: This Laboratory Grown Diamond was created by Chemical Vapor Deposition (CVD) growth process. Type IIa



January 20, 2025 IGI Report No LG670475561 ROUND BRILLIANT 10.60 CARATS E VS 1 EXCELLENT 58.8% 59% Medium To Slightly Thick (Faceted) Pointed EXCELLENT EXCELLENT NONE NONE IGI LG670475561 Comments: This Laboratory Grown Diamond was created by Chemical Vapor Deposition (CVD) growth process. Type IIa