



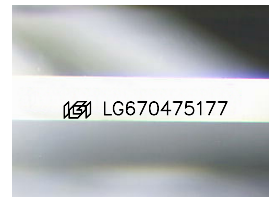
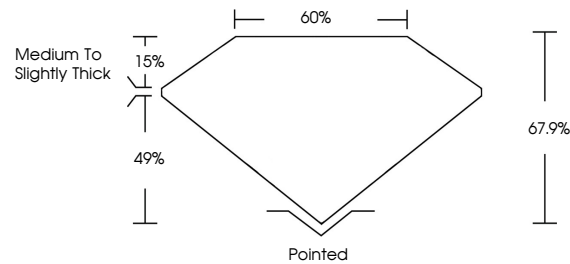
**INTERNATIONAL  
GEMOLOGICAL  
INSTITUTE**

**ELECTRONIC COPY**

## LABORATORY GROWN DIAMOND REPORT

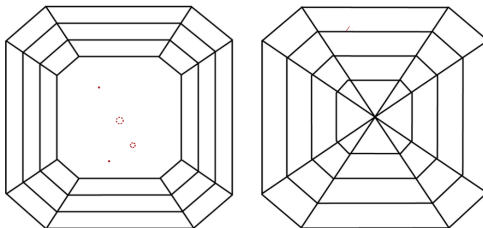
LG670475177  
Report verification at [igi.org](https://www.igi.org)

## PROPORTIONS



Sample Image Used

## CLARITY CHARACTERISTICS



## KEY TO SYMBOLS

Red symbols indicate internal characteristics.  
Green symbols indicate external characteristics.

**COLOR**

D E F G H I J Faint Very Light Light

## CLARITY

IF      WS<sup>1-2</sup>      VS<sup>1-2</sup>      SI<sup>1-2</sup>      I<sup>1-3</sup>

|                        |                                |                           |                      |          |
|------------------------|--------------------------------|---------------------------|----------------------|----------|
| Internally<br>Flawless | Very Very<br>Slightly Included | Very<br>Slightly Included | Slightly<br>Included | Included |
|------------------------|--------------------------------|---------------------------|----------------------|----------|



December 25, 2024

IGI Report Number **LG670475177**

|             |                          |
|-------------|--------------------------|
| Description | LABORATORY GROWN DIAMOND |
|-------------|--------------------------|

Shape and Cutting Style **SQUARE EMERALD CUT**

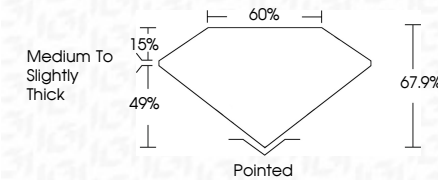
Measurements **7.95 X 7.92 X 5.38 MM**

## GRADING RESULTS

Carat Weight **3.09 CARATS**

|             |   |
|-------------|---|
| Color Grade | E |
|-------------|---|

Clarity Grade VS 1



### ADDITIONAL GRADING INFORMATION

Polish **EXCELLENT**Symmetry **EXCELLENT**Fluorescence **NONE**Inscription(s)  LG670475177

Comments: This Laboratory Grown Diamond was created by Chemical Vapor Deposition (CVD) growth process.  
Type IIa



IG



© IGI 2020, International Gemological Institute

FD - 10 20

**www.igi.org**

THIS DOCUMENT WAS PRODUCED WITH THE FOLLOWING SECURITY MEASURES: SPECIAL DOCUMENT PAPER, INK SCREENS, WATERMARK, BACKGROUND DESIGNS, HOLOGRAM AND OTHER SECURITY FEATURES NOT LISTED AND DO EXCEED DOCUMENT SECURITY INDUSTRY GUIDELINES

December 25, 2024  
IGI Report No LG670475177  
SQUARE EMERALD CUT

|                       |             |                          |  |
|-----------------------|-------------|--------------------------|--|
| 7.95 X 7.92 X 5.38 MM |             | 3.09 CARATS              |  |
| Carat Weight          | Color Grade | E                        |  |
| Clarity Grade         |             | VS 1                     |  |
| Depth                 |             | 67.9%                    |  |
| Table                 |             | 60%                      |  |
| Girdle                |             | Medium To Slightly Thick |  |
| Culet                 |             | Pointed                  |  |
| Poison                |             | EXCELLENT                |  |
| Symmetry              |             | EXCELLENT                |  |
| Fluorescence          |             | NONE                     |  |
| Inspection(s)         |             | 4811 G570795717          |  |

**Comments:**  
This Laboratory Grown Diamond was created by Chemical Vapor Deposition (CVD) growth process.