

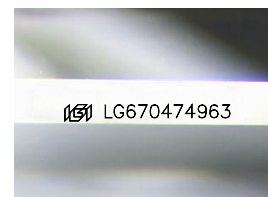
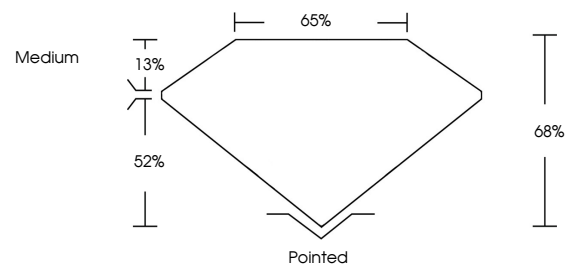


ELECTRONIC COPY

LABORATORY GROWN DIAMOND REPORT

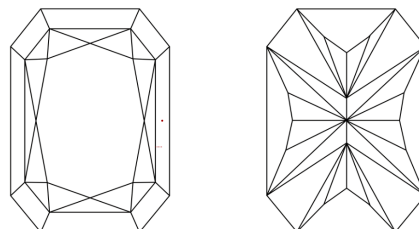
LG670474963
Report verification at igi.org

PROPORTIONS



Sample Image Used

CLARITY CHARACTERISTICS



KEY TO SYMBOLS

Red symbols indicate internal characteristics.
Green symbols indicate external characteristics.

COLOR

D E F G H I J Faint Very Light Light

CLARITY

IF	VS ¹⁻²	VS ¹⁻²	SI ¹⁻²	I ¹⁻³
Internally Flawless	Very Very Slightly Included	Very Slightly Included	Slightly Included	Included

LABORATORY GROWN DIAMOND REPORT



December 26, 2024

IGI Report Number LG670474963

Description **LABORATORY GROWN DIAMOND**

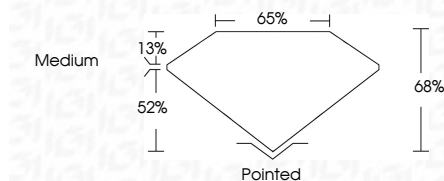
Shape and Cutting Style

Measurements 8.88 X 6.15 X 4.18 MM

GRADING RESULTS

Carat Weight 2.01 CARATS

Color Grade G

Clarity Grade WS 2

ADDITIONAL GRADING INFORMATION

Polish EXCELLENT

Symmetry **EXCELLENT**Fluorescence NONEInscription(s) LG670474963

Comments: This Laboratory Grown Diamond was created by Chemical Vapor Deposition (CVD) growth process.
Type IIa



© IGI 2020, International Gemological Institute

FD - 10 20

www.igi.org

THIS DOCUMENT WAS PRODUCED WITH THE FOLLOWING SECURITY MEASURES: SPECIAL DOCUMENT PAPER, INK SCREENS, WATERMARK, BACKGROUND DESIGNS, HOLOGRAM AND OTHER SECURITY FEATURES NOT LISTED AND DO EXCEED DOCUMENT SECURITY INDUSTRY GUIDELINE

December 26, 2024	
CU Report No. LG57007/4963	
CU COVERED RECT. MODIFIED BRILLIANT	
LG57007/4963 X 4.1 X 4.18 MM	
Carat Weight	2.01 CARATS
Color Grade	G
Clarity Grade	VVS 2
Depth	65%
Table	65%
Girdle	Medium
Culet	Pointed
Polish	EXCELLENT
Symmetry	EXCELLENT
Fluorescence	NONE
Inscriptions(s)	4961 LG57007/4963
Comments:	
	The Laboratory Grown Diamond was analyzed by Laser Vapor Deposition (LVD) growth process. type IIG