

ELECTRONIC COPY

LABORATORY GROWN DIAMOND REPORT

| | |
|-------------------------|--|
| December 24, 2024 | |
| IGI Report Number | LG670474619 |
| Description | LABORATORY GROWN DIAMOND |
| Shape and Cutting Style | CUT CORNERED RECTANGULAR MODIFIED BRILLIANT |
| Measurements | 8.24 X 5.71 X 3.89 MM |

GRADING RESULTS

| | |
|---------------|------------|
| Carat Weight | 1.58 CARAT |
| Color Grade | D |
| Clarity Grade | VS 1 |

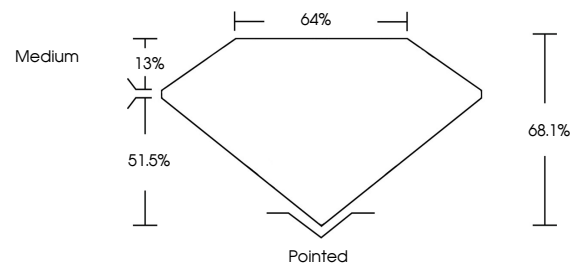
ADDITIONAL GRADING INFORMATION

| | |
|----------------|----------------|
| Polish | EXCELLENT |
| Symmetry | EXCELLENT |
| Fluorescence | NONE |
| Inscription(s) | 15 LG670474619 |

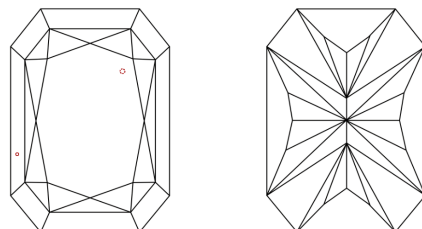
Comments: This Laboratory Grown Diamond was created by Chemical Vapor Deposition (CVD) growth process.
Type IIa

LG670474619
Report verification at lgi.org

PROPORTIONS

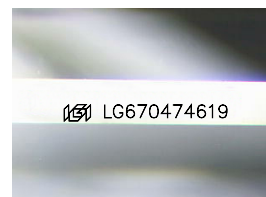


CLARITY CHARACTERISTICS



KEY TO SYMBOLS

Red symbols indicate internal characteristics.
Green symbols indicate external characteristics.



Sample Image Used

COLOR

D E F G H I J Faint Very Light Light

CLARITY

| IF | VS ¹⁻² | VS ¹⁻² | SI ¹⁻² | I ¹⁻³ |
|---------------------|-----------------------------|------------------------|-------------------|------------------|
| Internally Flawless | Very Very Slightly Included | Very Slightly Included | Slightly Included | Included |

LABORATORY GROWN DIAMOND REPORT

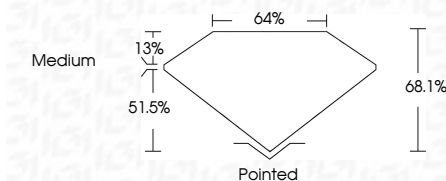


| | |
|-------------------------|---|
| December 24, 2024 | |
| IGI Report Number | LG670474619 |
| Description | LABORATORY GROWN DIAMOND |
| Shape and Cutting Style | CUT CORNERED RECTANGULAR MODIFIED BRILLIANT |

Measurements **8.24 X 5.71 X 3.89 MM**

GRADING RESULTS

| | |
|---------------|------------|
| Carat Weight | 1.58 CARAT |
| Color Grade | D |
| Clarity Grade | VS 1 |



ADDITIONAL GRADING INFORMATION

| | |
|---|---|
| Polish | EXCELLENT |
| Symmetry | EXCELLENT |
| Fluorescence | NONE |
| Inscription(s) |  LG670474619 |
| <p>Comments: This Laboratory Grown Diamond was created by Chemical Vapor Deposition (CVD) growth process.</p> <p>Type IIa</p> | |



© IGI 2020, International Gemological Institute

FD - 10 20

www.igi.org

| | | |
|-------------------|---------------------------|--------------------------------------|
| December 24, 2024 | GI Report No. LG570474619 | CU CORNERED RECT. MODIFIED BRILLIANT |
| 1.58 CARAT | 2.24 X 5.71 X 3.89 MM | |
| D | Color Grade | Clarity Grade |
| Vs1 | | Depth |
| 68.1% | | Table |
| 04% | | Grade |
| Medium | | |
| Pointed | Quiet | Polish |
| EXCELLENT | Symmetry | Symmetry |
| EXCELLENT | Fluorescence | Fluorescence |
| NONE | Inscriptions(s) | Inscriptions(s) |
| 1681LG570474619 | | |

Comments: Laboratory Grown Diamond was created by Chemical Vapor Deposition (CVD) growth process.
Type IIa