

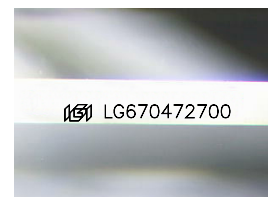
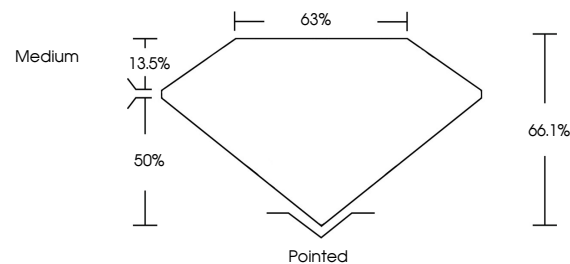


**ELECTRONIC COPY**

## LABORATORY GROWN DIAMOND REPORT

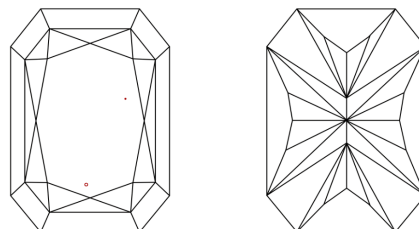
LG670472700  
Report verification at [igi.org](http://igi.org)

## PROPORTIONS



Sample Image Used

## CLARITY CHARACTERISTICS



### KEY TO SYMBOLS

Red symbols indicate internal characteristics.  
Green symbols indicate external characteristics.

## COLOR

D E F G H I J Faint Very Light Light

## CLARITY

IF	VS <sup>1-2</sup>	VS <sup>1-2</sup>	SI <sup>1-2</sup>	I <sup>1-3</sup>
Internally Flawless	Very Very Slightly Included	Very Slightly Included	Slightly Included	Included

## LABORATORY GROWN DIAMOND REPORT



December 21, 2024

IGI Report Number LG670472700

Description **LABORATORY GROWN DIAMOND**

Shape and Cutting Style

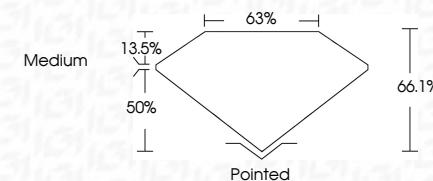
Measurements 9.25 X 6.41 X 4.24 MM

## GRADING RESULTS

Carat Weight 2.09 CARATS

Color Grade

Clarity Grade VS 1



### ADDITIONAL GRADING INFORMATION

Polish **EXCELLENT**Symmetry **EXCELLENT**Fluorescence **NONE**Inscription(s)  LG670472700

Comments: This Laboratory Grown Diamond was created by Chemical Vapor Deposition (CVD) growth process.  
Type IIa



© IGI 2020, International Gemological Institute

FD - 10 20

**www.igi.org**

THIS DOCUMENT WAS PRODUCED WITH THE FOLLOWING SECURITY MEASURES: SPECIAL DOCUMENT PAPER, INK SCREENS, WATERMARK, BACKGROUND DESIGNS, HOLOGRAM AND OTHER SECURITY FEATURES NOT LISTED AND DO EXCEED DOCUMENT SECURITY INDUSTRY GUIDELINES

December 21, 2024	GJ Report NG LS070427200	
GJ CORNERED RECT. MODIFIED BRILLIANT		
2.09 CARATS		
Carat Weight	D	
2.25 X 2.25 X 4.41 X 4.24 MM		
Color Grade	VS 1	
Clarity Grade	6A 1%	
Depth	65%	
Table	Medium	
Girdle		
Culet	Pointed	
Polish	EXCELLENT	
Symmetry	EXCELLENT	
Fluorescence	NONE	
Inscription(s)	18K1 65070427200	
Comments:	This Laboratory Grown Diamond was CVD grown by Vapor Deposition type IIa	