

December 21, 2024

IGI Report Number

LG670460322

Description

LABORATORY GROWN DIAMOND

Shape and Cutting Style

ROUND BRILLIANT

Measurements

10.13 - 10.20 x 6.27 mm

GRADING RESULTS

Carat Weight

4.03 CARATS

Color Grade

E

Clarity Grade

VS 1

Cut Grade

IDEAL

ADDITIONAL GRADING INFORMATION

Polish

EXCELLENT


Symmetry

EXCELLENT

Fluorescence

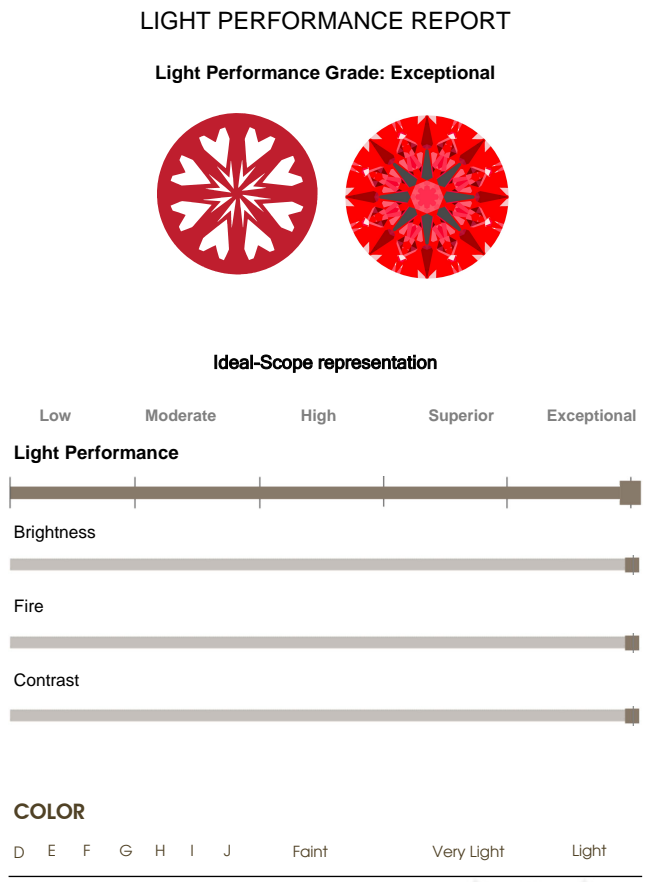
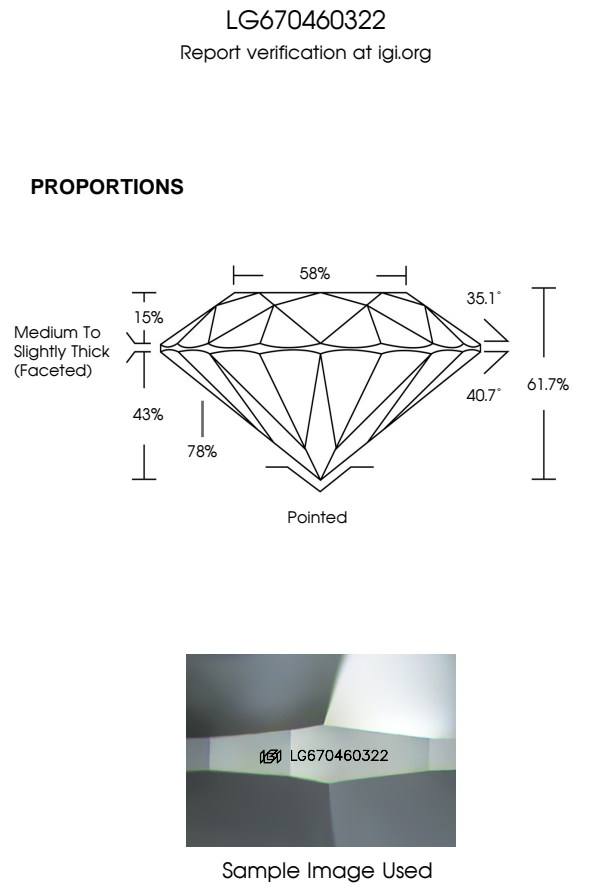
NONE


Inscription(s)

 LG670460322

Comments: HEARTS & ARROWS

This Laboratory Grown Diamond was created by Chemical Vapor Deposition (CVD) growth process. Type IIa





December 21, 2024

IGI Report Number

LG670460322

Description

LABORATORY GROWN DIAMOND

Shape and Cutting Style

ROUND BRILLIANT

Measurements

10.13 - 10.20 X 6.27 MM

GRADING RESULTS

Carat Weight

4.03 CARATS

Color Grade

E

Clarity Grade

VS 1

Cut Grade

IDEAL

ADDITIONAL GRADING INFORMATION

Polish

EXCELLENT


Symmetry

EXCELLENT

Fluorescence

NONE

Inscription(s)

 LG670460322

Comments: HEARTS & ARROWS

This Laboratory Grown Diamond was created by Chemical Vapor Deposition (CVD) growth process. Type IIa



IGI

December 21, 2024

IGI Report No LG670460322

ROUND BRILLIANT

10.13 - 10.20 X 6.27 MM

Carat Weight

4.03 CARATS

Color Grade

E

Clarity Grade

VS 1

Cut Grade

IDEAL

Depth

61.7%

Table

58%

Girdle

Medium To Slightly Thick (Faceted)

Culet

Pointed

Polish

EXCELLENT

Symmetry

EXCELLENT

Fluorescence

NONE

Inscription(s)

 LG670460322

Comments: HEARTS & ARROWS

This Laboratory Grown Diamond was created by Chemical Vapor Deposition (CVD) growth process. Type IIa