



ELECTRONIC COPY

LG670438803
Report verification at igi.org



April 17, 2025

IGI Report Number **LG670438803**

Description **LABORATORY GROWN DIAMOND**

Shape and Cutting Style **SQUARE EMERALD CUT**

Measurements **9.40 X 9.21 X 5.98 MM**

GRADING RESULTS

Carat Weight **5.00 CARATS**

Color Grade **FANCY VIVID BLUE**

Clarity Grade **VS 2**

April 17, 2025
IGI Report Number **LG670438803**
Description **LABORATORY GROWN DIAMOND**
Shape and Cutting Style **SQUARE EMERALD CUT**
Measurements **9.40 X 9.21 X 5.98 MM**

GRADING RESULTS

Carat Weight **5.00 CARATS**

Color Grade **FANCY VIVID BLUE**

Clarity Grade **VS 2**

ADDITIONAL GRADING INFORMATION

Polish **EXCELLENT**

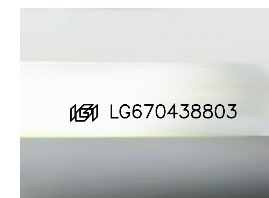
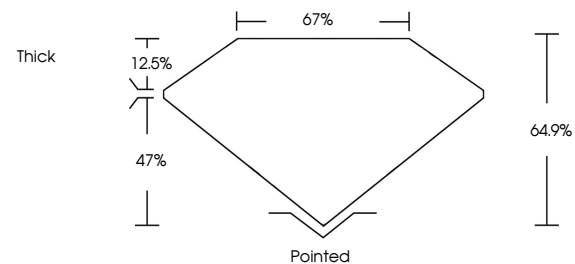
Symmetry **EXCELLENT**

Fluorescence **NONE**

Inscription(s) **LG670438803**

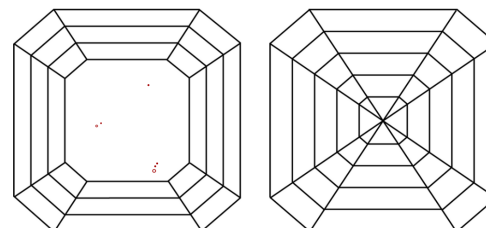
Comments: This Laboratory Grown Diamond was created by Chemical Vapor Deposition (CVD) growth process.
Indications of post-growth treatment.

PROPORTIONS



Sample Image Used

CLARITY CHARACTERISTICS



KEY TO SYMBOLS

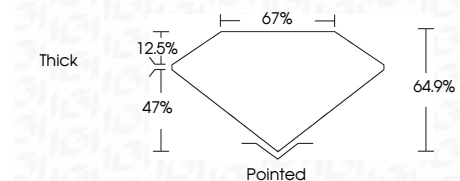
Red symbols indicate internal characteristics.
Green symbols indicate external characteristics.

COLOR

D E F G H I J Faint Very Light Light

CLARITY

| IF | VS ¹⁻² | VS ¹⁻² | SI ¹⁻² | I ¹⁻³ |
|---------------------|-----------------------------|------------------------|-------------------|------------------|
| Internally Flawless | Very Very Slightly Included | Very Slightly Included | Slightly Included | Included |



ADDITIONAL GRADING INFORMATION

Polish **EXCELLENT**

Symmetry **EXCELLENT**

Fluorescence **NONE**

Inscription(s) **LG670438803**

Comments: This Laboratory Grown Diamond was created by Chemical Vapor Deposition (CVD) growth process.
Indications of post-growth treatment.



IGI



April 17, 2025
IGI Report No **LG670438803**
SQUARE EMERALD CUT
5.00 CARATS
Carat Weight
Color Grade **FANCY VIVID BLUE**
Clarity Grade **VS 2**
Depth **64.9%**
Table **67%**
Girdle **Thick**
Culet **Pointed**
Polish **EXCELLENT**
Symmetry **EXCELLENT**
Fluorescence **NONE**
Inscription(s) **LG670438803**
Comments: This Laboratory Grown Diamond was created by Chemical Vapor Deposition (CVD) growth process.
Indications of post-growth treatment.