



**INTERNATIONAL  
GEMOLOGICAL  
INSTITUTE**

**ELECTRONIC COPY**

**LG670437601**

**LABORATORY GROWN DIAMOND REPORT**

December 26, 2024  
 IGI Report Number **LG670437601**  
 Description **LABORATORY GROWN DIAMOND**  
 Shape and Cutting Style **HALF MOON BRILLIANT**  
 Measurements **4.92 X 7.61 X 3.55 MM**

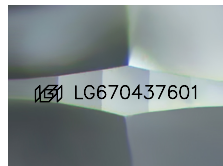
**GRADING RESULTS**

Carat Weight **0.91 CARAT**  
 Color Grade **FANCY INTENSE PINK**  
 Clarity Grade **VS 2**

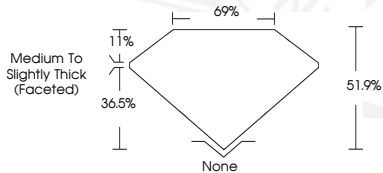
**ADDITIONAL GRADING INFORMATION**

Polish **EXCELLENT**  
 Symmetry **EXCELLENT**  
 Fluorescence **SLIGHT**  
 Inscription(s) **IGI LG670437601**

Comments: This Laboratory Grown Diamond was created by Chemical Vapor Deposition (CVD) growth process. Indications of post-growth treatment.



Sample Image Used



December 26, 2024  
 IGI Report Number **LG670437601**  
 HALF MOON BRILLIANT  
 LABORATORY GROWN DIAMOND  
 4.92 X 7.61 X 3.55 MM  
 Carat Weight **0.91 CARAT**  
 Color Grade **FANCY INTENSE PINK**  
 Clarity Grade **VS 2**  
 Polish **EXCELLENT**  
 Symmetry **EXCELLENT**  
 Fluorescence **SLIGHT**  
 Inscription(s) **IGI LG670437601**

Comments: This Laboratory Grown Diamond was created by Chemical Vapor Deposition (CVD) growth process. Indications of post-growth treatment.



December 26, 2024  
 IGI Report Number **LG670437601**  
 HALF MOON BRILLIANT  
 LABORATORY GROWN DIAMOND  
 4.92 X 7.61 X 3.55 MM  
 Carat Weight **0.91 CARAT**  
 Color Grade **FANCY INTENSE PINK**  
 Clarity Grade **VS 2**  
 Polish **EXCELLENT**  
 Symmetry **EXCELLENT**  
 Fluorescence **SLIGHT**  
 Inscription(s) **IGI LG670437601**

Comments: This Laboratory Grown Diamond was created by Chemical Vapor Deposition (CVD) growth process. Indications of post-growth treatment.

THIS DOCUMENT WAS PRODUCED WITH THE FOLLOWING SECURITY MEASURES: SPECIAL DOCUMENT PAPER, PINK SCREENS, WATERMARK, BACKGROUND DESIGN, HOLOGRAM AND OTHER SECURITY FEATURES NOT LISTED AND DO EXCEED DOCUMENT SECURITY INDUSTRY GUIDELINES.

For terms & conditions and to verify this report, please visit [www.igi.org](http://www.igi.org)