

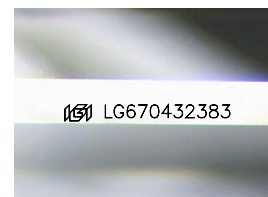
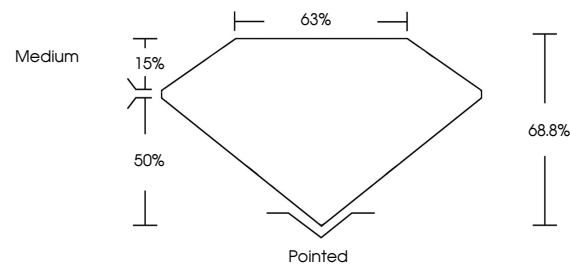


ELECTRONIC COPY

LABORATORY GROWN DIAMOND REPORT

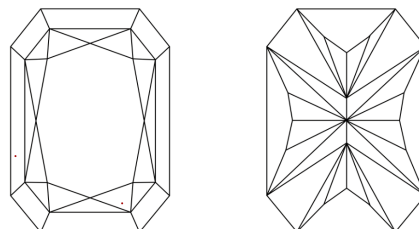
LG670432383
Report verification at lgi.org

PROPORTIONS



Sample Image Used

CLARITY CHARACTERISTICS



KEY TO SYMBOLS

Red symbols indicate internal characteristics.
Green symbols indicate external characteristics.

COLOR

D E F G H I J Faint Very Light Light

CLARITY

IF	VS ¹⁻²	VS ¹⁻²	SI ¹⁻²	I ¹⁻³
Internally Flawless	Very Very Slightly Included	Very Slightly Included	Slightly Included	Included

LABORATORY GROWN DIAMOND REPORT



December 19, 2024

IGI Report Number **LG670432383**

Description **LABORATORY GROWN DIAMOND**

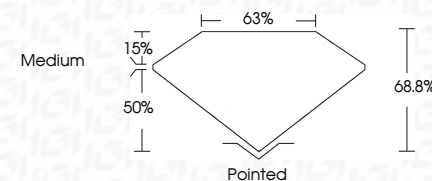
Shape and Cutting Style

Measurements **8.86 X 6.06 X 4.17 MM**

GRADING RESULTS

Carat Weight **2.02 CARATS**

Color Grade D

Clarity Grade VVS 2

ADDITIONAL GRADING INFORMATION

Polish **EXCELLENT**Symmetry **EXCELLENT**Fluorescence NONEInscription(s) **13** LG670432383

Comments: This Laboratory Grown Diamond was created by Chemical Vapor Deposition (CVD) growth process.
Type IIa



© IGI 2020, International Gemological Institute

FD - 10 20

www.igi.org

THIS DOCUMENT WAS PRODUCED WITH THE FOLLOWING SECURITY MEASURES: SPECIAL DOCUMENT PAPER, INK SCREENS, WATERMARK, BACKGROUND DESIGNS, HOLOGRAM AND OTHER SECURITY FEATURES NOT LISTED AND DO EXCEED DOCUMENT SECURITY INDUSTRY GUIDELINE

December 19, 2024	GI Report No. LG570432383
CUT CORNERED RECT. MODIFIED BRILLIANT	
2.02 CARATS	
D	
	VVS 2
	68.6%
	65%
	Medium
	Polished
	EXCELLENT
	EXCELLENT
	NONE
	681.LG570432383

Comments: Very Fine, Green Diamond was created by Chemical Vapor Deposition (CVD) growth process.

Type IIa