



**ELECTRONIC COPY**

LG670431795  
Report verification at igi.org



January 6, 2025  
IGI Report Number **LG670431795**  
Description **LABORATORY GROWN DIAMOND**  
Shape and Cutting Style **CUSHION MODIFIED BRILLIANT**  
Measurements **6.85 X 5.96 X 3.98 MM**  
**GRADING RESULTS**  
Carat Weight **1.53 CARAT**  
Color Grade **FANCY VIVID YELLOW**  
Clarity Grade **VS 2**

**LABORATORY GROWN DIAMOND REPORT**

January 6, 2025  
IGI Report Number **LG670431795**  
Description **LABORATORY GROWN DIAMOND**  
Shape and Cutting Style **CUSHION MODIFIED BRILLIANT**  
Measurements **6.85 X 5.96 X 3.98 MM**

**GRADING RESULTS**

Carat Weight **1.53 CARAT**  
Color Grade **FANCY VIVID YELLOW**  
Clarity Grade **VS 2**

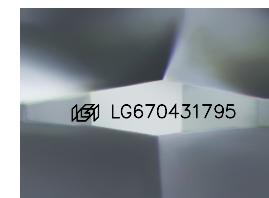
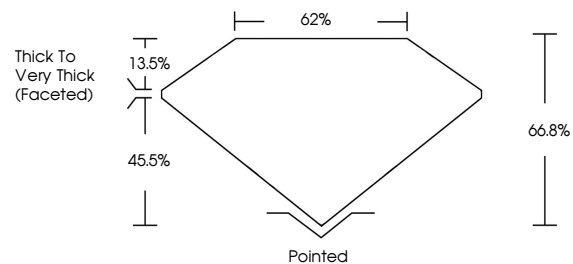
**ADDITIONAL GRADING INFORMATION**

Polish **EXCELLENT**  
Symmetry **EXCELLENT**  
Fluorescence **NONE**  
Inscription(s) **IGI LG670431795**

Comments: This Laboratory Grown Diamond was created by Chemical Vapor Deposition (CVD) growth process.

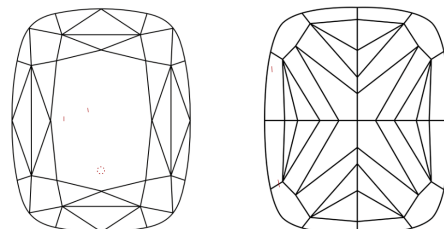
Secondary color: Brown

**PROPORTIONS**



Sample Image Used

**CLARITY CHARACTERISTICS**



**KEY TO SYMBOLS**

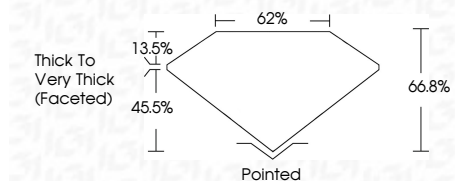
Red symbols indicate internal characteristics.  
Green symbols indicate external characteristics.

**COLOR**

D E F G H I J Faint Very Light Light

**CLARITY**

IF	VS <sup>1-2</sup>	VS <sup>1-2</sup>	SI <sup>1-2</sup>	I <sup>1-3</sup>
Internally Flawless	Very Very Slightly Included	Very Slightly Included	Slightly Included	Included



**ADDITIONAL GRADING INFORMATION**

Polish **EXCELLENT**  
Symmetry **EXCELLENT**  
Fluorescence **NONE**  
Inscription(s) **IGI LG670431795**  
Comments: This Laboratory Grown Diamond was created by Chemical Vapor Deposition (CVD) growth process.  
Secondary color: Brown



**IGI**



January 6, 2025  
IGI Report No **LG670431795**  
**CUSHION MODIFIED BRILLIANT**  
**6.85 X 5.96 X 3.98 MM**  
Carat Weight **1.53 CARAT**  
Color Grade **FANCY VIVID YELLOW**  
Clarity Grade **VS 2**  
Depth **45.5%**  
Table **62%**  
Girdle **Thick to Very Thick (Faceted)**  
Culet **Pointed**  
Polish **EXCELLENT**  
Symmetry **EXCELLENT**  
Fluorescence **NONE**  
Inscription(s) **IGI LG670431795**

Comments: This Laboratory Grown Diamond was created by Chemical Vapor Deposition (CVD) growth process.  
Secondary color: Brown